

**SUPPLEMENT TO  
AMERICA IS BORN**

**Introducing the  
Regulus USA National Horoscope**

**RECTIFICATION DATABASE**

**PART II**

**Regulus Astrology LLC**

**November 25, 2008**

## Rectification Database

Presentation. I have chosen to present rectification results for nativities presented in *America is Born* (AIB) Appendix C in a supplement for several reasons. First is to allow presentation of photographs for individuals studied as physiognomy has taken on a greater role in my rectification style. In addition, inclusion of photos in a book introduces additional technical and financial costs which I did not feel worthy the expense. Second is to keep the page count and pricing of the book down to a reasonable figure.

Notation. This supplement uses the notation format for directions described in the Introduction to AIB.

Longevity. For deceased individuals, longevity analysis is presented in accordance with the hīlāj // al-kadukadah model presented in *A Rectification Manual: The American Presidency*. As a simplification in terminology, this supplement uses the phrase ‘giver of life’ for the *hilaj*; ‘giver of years’ for the *al-kadukadah*; and ‘Ruler of the Chart’ for the *Al-mubtazz Figurae*.

## Birth Data

Of the following 43 horoscopes, Astrodatbank reports 11 B-rated or higher:

With two exceptions - J. P. Morgan and Henry Wallace - rectified birth times represent minor adjustments to reported data. For J. P. Morgan, the rectified birth time of 12:33:41 PM falls close to the 1:10 PM rectified time computed by J. P. Morgan’s private astrologer Evangeline Adams. This leaves the rectified time for Henry Wallace the single large departure from existing records.

The ‘n.a.’ notation indicates I have taken the reported birth times as given with no adjustments.

The 32 horoscopes presented have been rectified from scratch. Besides rectifications for Presidents James Madison and Calvin Coolidge which can be found in *A Rectification Manual*, details for all remaining horoscopes are presented here.

## Comparison of Reported and Rectified Birth Times

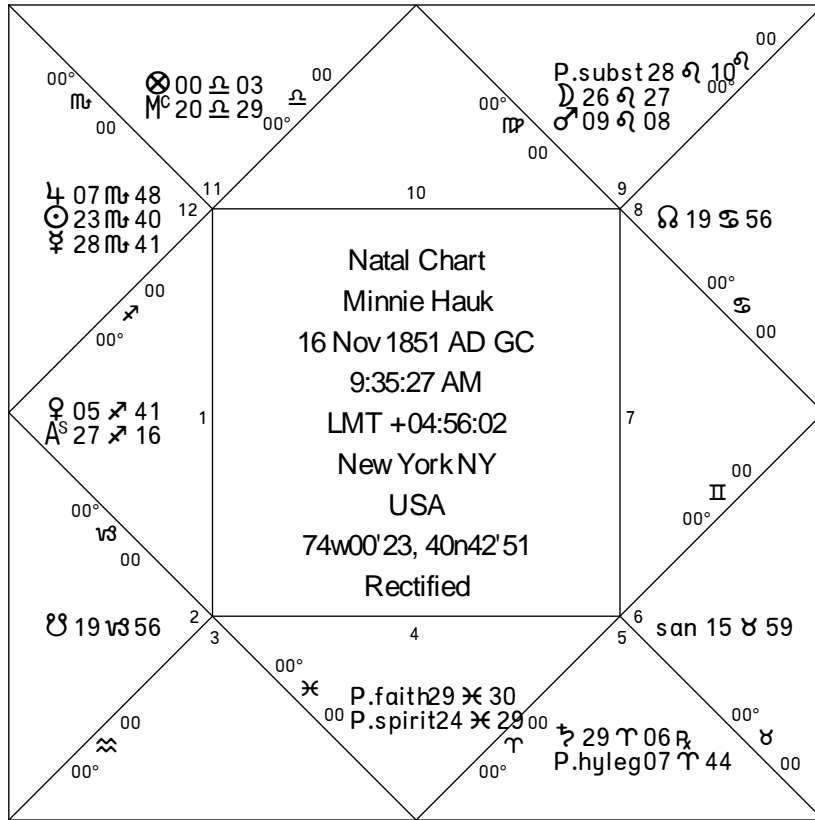
Person	Source	Rating	ADB	Rectified
W. Whitman	From memory	A	2:45 AM	2:43:25 AM
J. P. Morgan	Quoted BC/BR	AA	3:00 AM	12:33:41 PM
A. Bell	Quoted BC/BR	AA	7:00 AM	6:51:43 AM
J. Rockefeller	Bio/autobiography	B	10:00 AM	10:04:35 AM
H. Wallace	From memory	A	7:12 PM	1:13:19 AM
G. Peck	BC/BR in hand	AA	8:00 AM	8:08:39 AM
F. Sinatra	From memory	A	3:00 AM	3:12:38 AM
S. Stallone	BC/BR in hand	AA	3:35 AM	n.a.
B. Gates	From memory	A	10:00 PM	9:51:10 PM
M. Stewart	BC/BR in hand	AA	1:33 PM	n.a.

---

Copyright © Regulus Astrology LLC 2008

All rights reserved. No part of this work may be used or reproduced in any manner whatsoever without written permission from the publisher, except in the case of brief quotations embodied in critical articles or reviews.

For all other permission queries, write Regulus Astrology LLC, 66 Witherspoon Street #336, Princeton, New Jersey, 08542.



## Distributor: Venus/Taurus. Minnie Hauk - Proposed Ascendant: 27SA16'37"

The nativity of Minnie Hauk is an excellent example of the ability of the Lunar Nodes to time key events for which a public record was made. Of four major life events mentioned by Peter Davis in his 1997 profile of Hauk<sup>1</sup>, three were timed by Sun-Node directions:

D	Mercury/Leo	P	dex. square Sun d. → North Node	24-Aug-1878
---	-------------	---	---------------------------------	-------------

Midpoint between Hauk's *Carmen* premieres in London (22-Jun-1878) and New York (23-Oct-1878).

SA	d.s.a. Nodes square Sun	12-Feb-1885
----	-------------------------	-------------

Onstage conflict with Luigi Ravelli (8-Feb-1885) and lawsuit against Ravelli for insults and a threat against Hauk's life (9-Feb-1885). North Node/8<sup>th</sup>/death.

D	Jupiter/Libra	P	sin. square North Node c. → Sun	26-Sep-1891
---	---------------	---	---------------------------------	-------------

'Last hurrah' tour of *Carmen* with Grand Opera Company in Chicago, 28-Sep-1891.  
U.S. premiere of Mascagni's *Cavalleria Rusticana* (30-Sep-1891).

### Other key professional events

D	Jupiter/Scorpio	P	Sun (l=VE) c. → Venus	13-Sep-1866
D	Jupiter/Scorpio	P	Sun (l=0) c. → Venus	21-Oct-1866

New York City debut in *La Sonnambula* at the Brooklyn Academy of Music, 13-Oct-1866.

TR	Uranus conj. Moon	9-Sep-1877, 10-Mar-1878, 23-Jun-1878
----	-------------------	--------------------------------------

These three Uranus-Moon transits time the period leading up to Minnie Hauk's London premiere of *Carmen* on 22-Jun-1878 which was a sensation and her signature role for which she is remembered. Her performance was overseas in London, matching the Moon's placement in the 9<sup>th</sup> house of foreign lands. Consider that Uranus at 1TA31 falls in the bound of Venus/Taurus and the antiscion of Uranus 28LE29 is closely conjunct the Moon and square Mercury.

D	Jupiter/Libra	P	MC c. → Sun	3-Feb-1891
---	---------------	---	-------------	------------

Returned to New York from Europe for farewell performances.

**Longevity: 77y 2m 21d.** Died 6-Feb-1929.

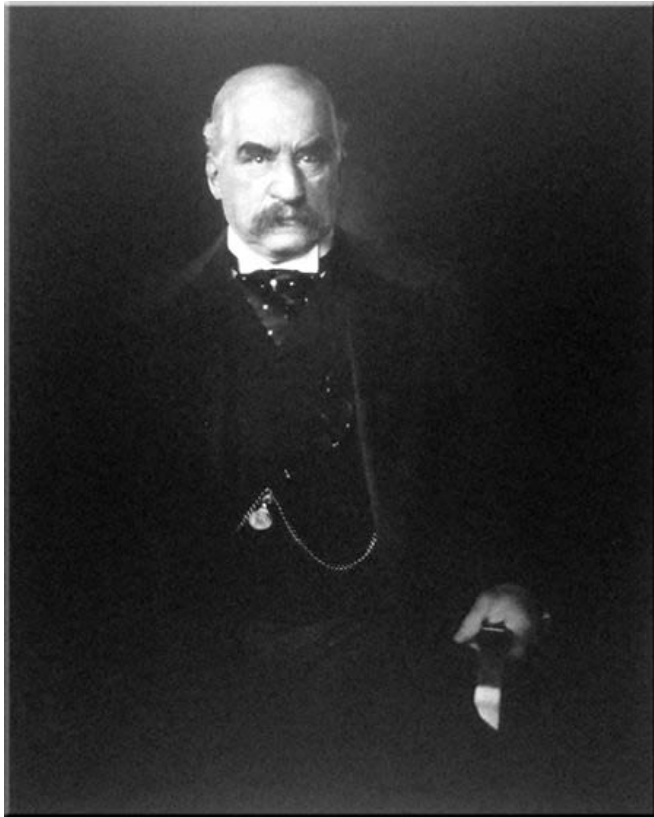
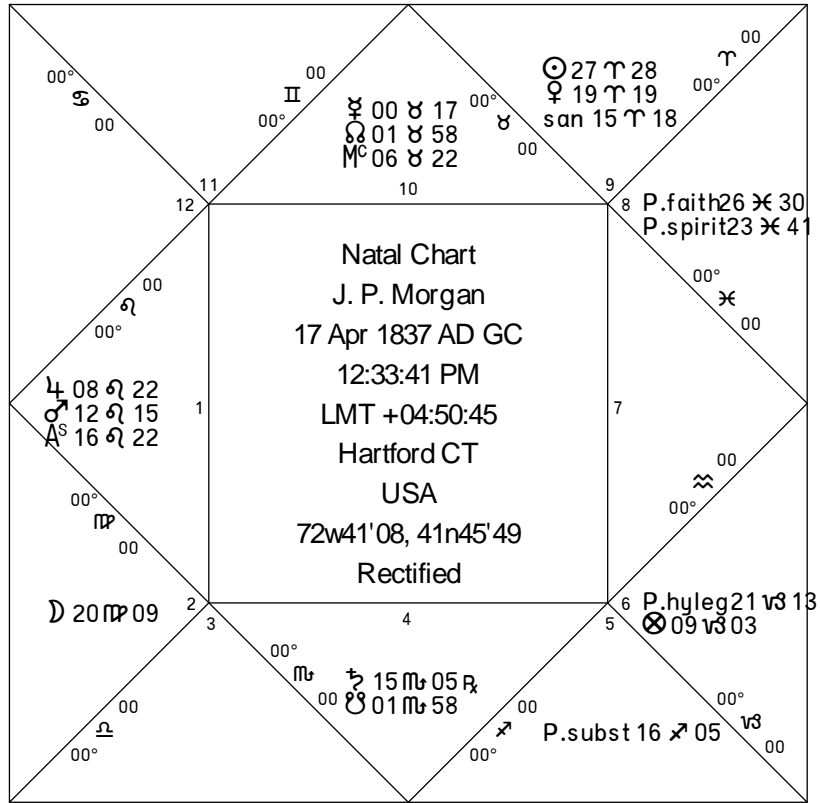
Moon tests will as the giver of life, despite 9<sup>th</sup> house whole sign placement in the house opposite to her joy. High scoring killing planet is Mars. The best candidate for giver of years is Venus who grants her 82 major years. Mars sends a trine to Venus and should deduct his 15 minor years. However mutual reception between Sun and Mars as well as Jupiter's ray to Mars appears improve the zodiacal state of Mars to the point that he deducts one-third of his 15 minor years. Net projection of 77 years is accurate.

D	Mars/Sagittarius	P	sin. trine Mars (l=MA) d. → Moon	23-Apr-1929
D	Jupiter/Gemini	P	dex. sextile Mars (l=MA) c. → Moon	7-May-1929
D	Saturn/Taurus	P	dex. square Moon (l=MA) c. → Mars	21-Mar-1929

High scoring killers are Mars (47) and Jupiter (34). All three directions join the high scoring killer and the giver of life. For day of death, see also tr. Venus/Uranus conj Part of Death 4AR42 and c. tr. Mars 11CA34 conj antiscion of Part of Life 11CA26.

---

<sup>1</sup> Peter Davis, 'Ball of Fire: The sizzling life and times of Minnie Hauk, America's first international opera superstar,' *Opera News*, March 22, 1997.



## Distributor: Mercury/Taurus. J. P. Morgan - Proposed Ascendant: 16LE22'11"

### Physiognomy

Leo rising with decan ruler Jupiter/Leo in the Ascendant accentuates Morgan's barrel chest. His prominent nose, piercing eyes, and dark contrasting eyebrows are all classic Scorpio characteristics. Natal Saturn/Scorpio conjunct the Ascendant's contra-antiscion within two degrees and Jupiter's placement in the dwad of Scorpio are responsible for Morgan's Scorpio features.

SA	d.s.a. MC sextile Sun	9-Apr-1890
----	-----------------------	------------

Death of father, 8-Apr-1890.

SA	d.s.a. Saturn trine MC	27-Jun-1890
----	------------------------	-------------

President Benjamin Harrison signed the Dependent Pension Act; legislation which would balloon the Federal deficit, raise concerns by foreign investors on quality of US government debt, and would lead to a run on the nation's gold supply.

SA	d.s.a. Saturn conj POF	15-Apr-1893
----	------------------------	-------------

Panic of 1893 - US gold reserves fell below the legal limit of \$100 million on 22-Apr-1893.

D	Venus/Cancer	P	sin. trine Uranus (I=U) d. → MC	9-Feb-1901
D	Venus/Cancer	P	sin. trine Uranus (I=0) d. → MC	25-Feb-1901

Rumors started to surface on the formation of a steel trust on 8-Feb-1901; US Steel was announced on 25-Feb-1901.

D	Saturn/Aquarius	P	dex. sextile Sun c. → MC	5-Sep-1901
---	-----------------	---	--------------------------	------------

McKinley assassination, 6-Sep-1901. As explained in AIB Saturn-Ascendant Direction #6, the assassination of McKinley brought Theodore Roosevelt to the Presidency who fought corporate trusts.

TR	Uranus conj POF	16-Oct-1907
----	-----------------	-------------

**Panic of 1907:** Marked beginning of stock decline.

D	Mercury/Libra	P	sin. sextile Mars (I=MA) d. → ASC	20-Oct-1907
---	---------------	---	-----------------------------------	-------------

**Panic of 1907:** On 21-Oct-1907 the Knickerbocker Trust Company was rumored to be bankrupt.

D	Mars/Leo	P	dex. trine Sun (I=0) c. → Saturn	2-Nov-1907
---	----------	---	----------------------------------	------------

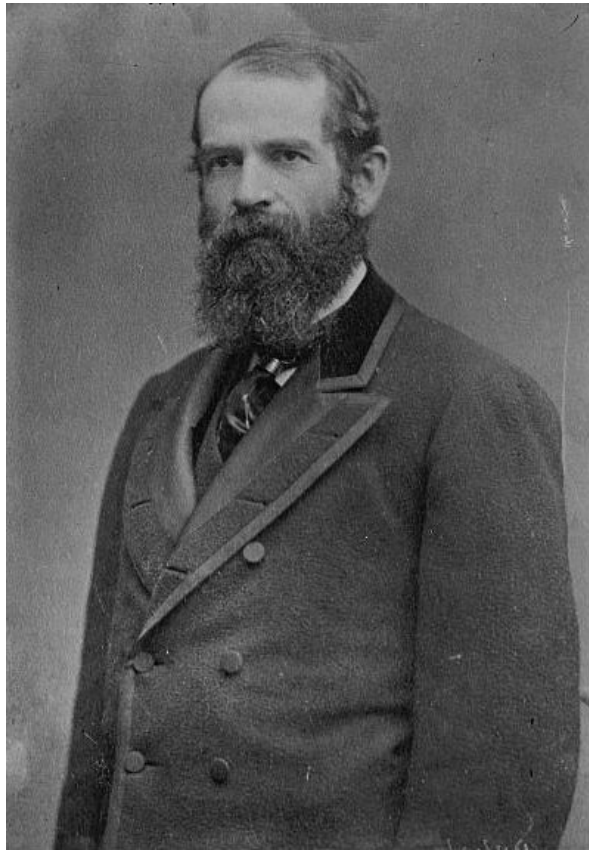
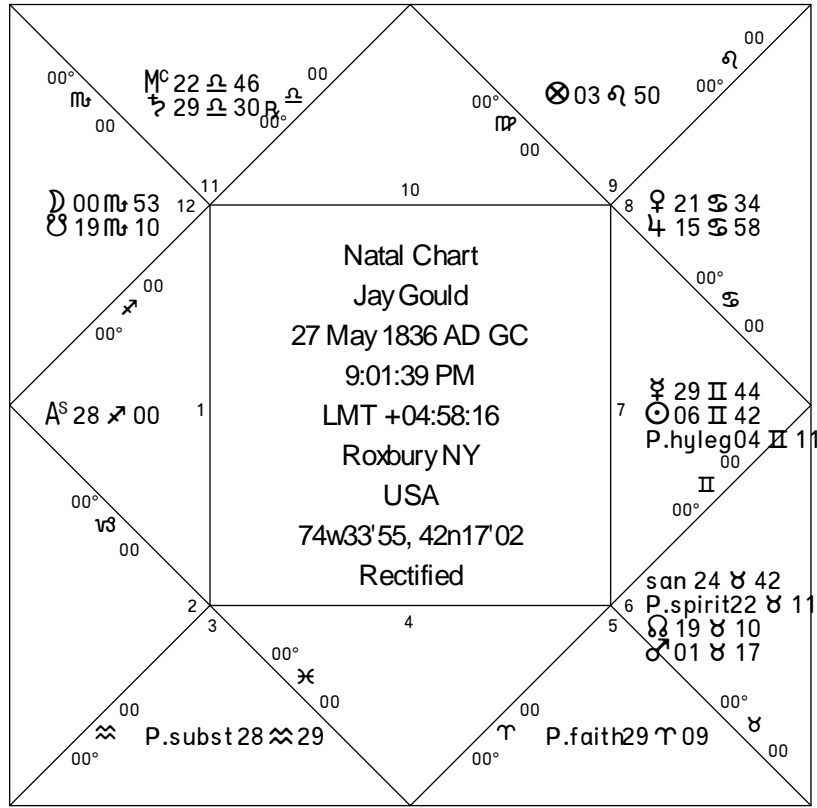
**Panic of 1907:** President Roosevelt allows US Steel to buy Tennessee Coal and Iron Company at distressed prices during the Panic of 1907 on 29-Oct-1907. J. P. Morgan would later come under much criticism for this special privilege.

**Longevity: 75y 11m 13d.** Died 31-Mar-1913.

Sun/Aries/9<sup>th</sup> is in the sign of his exaltation and his house of joy. Sun serves double duty as giver of life and giver of years. Sun grants his 120 major years. Mars trines and receives the Sun but the trine aspect is out of orb. There are no reasonable workouts to Morgan's demise at age 75 that I have found.

SA	c.s.a. South Node conj ASC	22-Feb-1913
----	----------------------------	-------------

Though the South Node-ASC solar arc measurement is a possible arcus vitae, consider also that the Sun is not only the giver of life but the high scoring killing planet. Morgan's death is preceded by a solar eclipse falling in the 8<sup>th</sup> house of death in the 1912 solar return.



## Distributor: Jupiter/Taurus. Jay Gould - Proposed Ascendant: 28SA00'33"

Renehan, Edward J. Jr. *Dark Genius of Wall Street: The Misunderstood Life of Jay Gould, King of Robber Barons*. Basic Books, 2005.

### Physiognomy

Ascendant ruler Jupiter/Cancer matches smoothness and round shape of upper forehead. Impact of decan ruler Sun/Gemini is less obvious.

### Configuration of chart

Ascendant ruler Jupiter/Cancer in the 8<sup>th</sup> of debt ruled by Moon/Scorpio in the 12<sup>th</sup> is consistent with Gould's business tactic of declaring bankruptcy for strategic business purposes. Mercury conjunct the 7<sup>th</sup> cusp within two degrees signifies frequent lawsuits, for which Gould was famous. Signs on the angles as well as Venus, Jupiter, and Saturn planet/sign placements recapitulate features of the Regulus USA National Horoscope.

### Measurements

D	Jupiter/Leo	P	dex. square Moon (l=0) d. → Venus	16-Jan-1841
D	Jupiter/Leo	P	dex. square Moon (l=MO) d. → Venus	8-Feb-1843
D	Jupiter/Leo	P	dex. square Moon (l=VE) d. → Venus	27-Jun-1844

Death of mother, Mary Moore Gould, January 1841.

Death of 1<sup>st</sup> stepmother, 19-Dec-1841.

Death of 2<sup>nd</sup> stepmother, 1845.

D	Venus/Taurus	P	Mars (l=MA) d. → opposition MC	14-Mar-1844
D	Venus/Taurus	P	Mars (l=0) d. → opposition MC	29-Jun-1844

D	Venus/Libra	P	MC (l=MO) c. → Moon	14-Jul-1844
D	Venus/Libra	P	MC (l=0) c. → Moon	3-Dec-1844

Renehan describes a series of incidents culminating with an armed confrontation between Gould's father and locals over a rent war. Gould's father triggered the confrontation on 6-Jul-1844 and some days later stared down multiple weapons aimed at his head with son Jay Gould at his side. Gould's father stood his ground and there were no shots fired. Mars rules the 5<sup>th</sup> of rents (2<sup>nd</sup> from the 4<sup>th</sup>).

D	Mars/Aries	P	MC (l=0) d. → opposition Uranus	24-Sep-1869
D	Mars/Aries	P	MC (l=UR) d. → opposition Uranus	5-Jun-1870

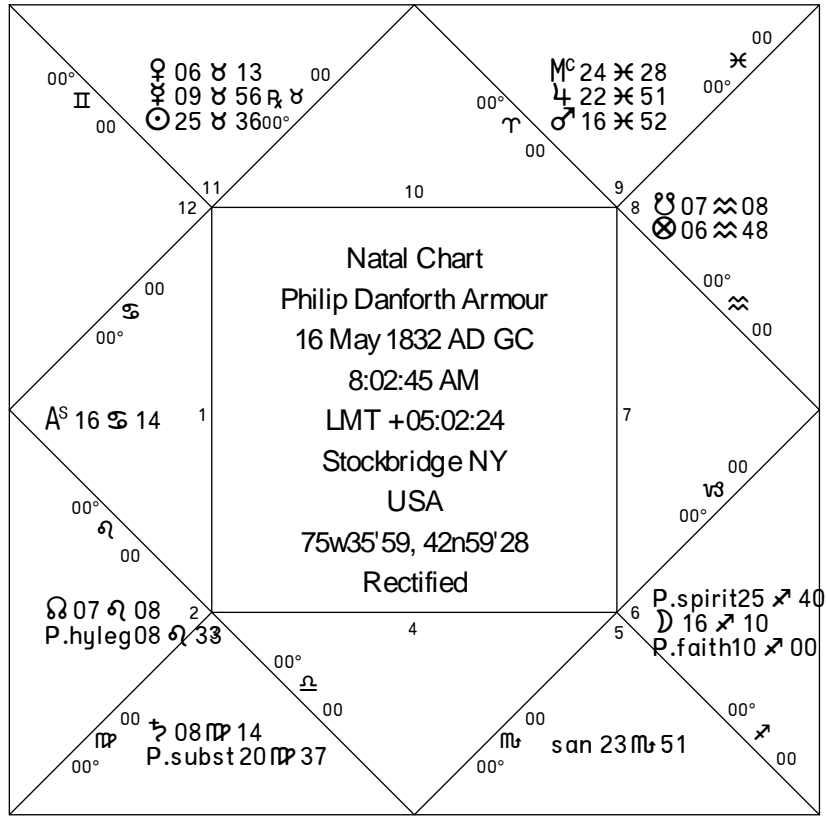
Gold Panic of 1869 (exact) and start of Railroad War against Vanderbilt (1/6-Jun-1870).

### Longevity: 56y 6m 27d. Died December 2, 1892.

Figure is nocturnal and the Moon is preferred as the giver of life. However the Moon's placement in the 12<sup>th</sup> and placement in the same sign as the South Node rules it out. Though the Sun falls more than 5 degrees below the 7<sup>th</sup> house cusp, Sun is still angular by whole sign houses and functions as the empirical giver of life. Longevity just shy of 57 years raises suspicions that Saturn with his 57 major years overrules all other candidates for the giver of years. Saturn placed near the 10<sup>th</sup> cusp appears the giver of years though it falls more than 5 degrees behind the MC degree which is Bonatti's recommended guideline.

D	Mars/Aries	P	dex. square Venus (l=0) c. → Sun	2-Dec-1892
---	------------	---	----------------------------------	------------

High scoring killers are Jupiter and Mercury. Mercury does transit the Ascendant the day of death, but Venus appears the empirical killer with the Venus-Sun direction exact for day of death. In the 1892 solar return prior to death, Venus is also placed in the Sun's antiscion.



## Distributor: Saturn/Taurus. Philip Danforth Armour - Proposed Ascendant: 16CA14'05"

The proposed Ascendant is slightly later than an Ascendant of 12CA52'34" published in *America is Born*. Physiognomy analysis (see next) revealed a strong Capricorn trait which is only possible if the Ascendant falls between 15CA00'00" and 17CA29'59" in the dwad of Capricorn.

### Physiognomy

Ascendant ruler Moon/Sagittarius is consistent with Armour's large girth which appears widest at the hips if this photograph is representative. Decan ruler Mars/Pisces does not appear to add any roundness to the face; however, it is interesting to notice that Armour's sideburns occupy a similar placement on the face that gills do for fish. The goatee grown on Armour's chin resembles the facial hair of a billy goat which is a Capricorn trait as well as the general shape of his head. For another example of a classic Capricorn head, see: <http://en.wikipedia.org/wiki/Image:WytheGeorge.jpg>.

### Configuration of Chart: Meatpacking

- Ascendant ruler Moon falls in the 6<sup>th</sup> of small animals. Moon's sign of Cancer falls 8 signs from its placement in the 6<sup>th</sup>. By derived houses, the 8<sup>th</sup> from the 6<sup>th</sup> signifies death of farm animals.
- Moon applies to Mars/Pisces. This shows slaughter of cattle in addition to injuries to workers. Pictures of slaughterhouses from this era often show workers standing in pools of blood which is consistent with Mars/Pisces because Mars=blood and Pisces=feet. Armour & Company was founded in 1867, a probable match to the diurnal Fidaria series for the Moon-Mars period starting 25-Mar-1867 running to 5-Jul-1868.
- Sun, diurnal triplicity ruler of the 6<sup>th</sup> house, signifies fame from cattle because Sun is placed in the sign of Taurus the bull. The Sun is further specified to meatpacking because its position in the bound of Saturn/Taurus signifies partitioning and storage.
- Venus/Taurus is the logical significator for cattle themselves. Venus approaching the sunbeams can be likened to live cattle walking into a slaughterhouse.

**Longevity: 68y 7m 21d.** Died January 6, 1901.

On January 27, 1900, the sudden death of his son Phil D. Armour Jr. was a shock from which Armour Sr. never recovered. Armour Sr.'s health had been in decline since Spring 1899 and Armour Sr. had traveled widely in order to seek spa remedies and other treatments. Already in a weakened state, the death of Armour Jr. proved devastating.

SA	c.s.a. ASC conj Mercury	27-Jan-1900
----	-------------------------	-------------

Son died, exact date. Mercury rules 12<sup>th</sup> death of children.

SA	c.s.a. Jupiter conj DSC	24-May-1900
----	-------------------------	-------------

Jupiter/Pisces signifies pneumonia which Armour did contract (no exact date).

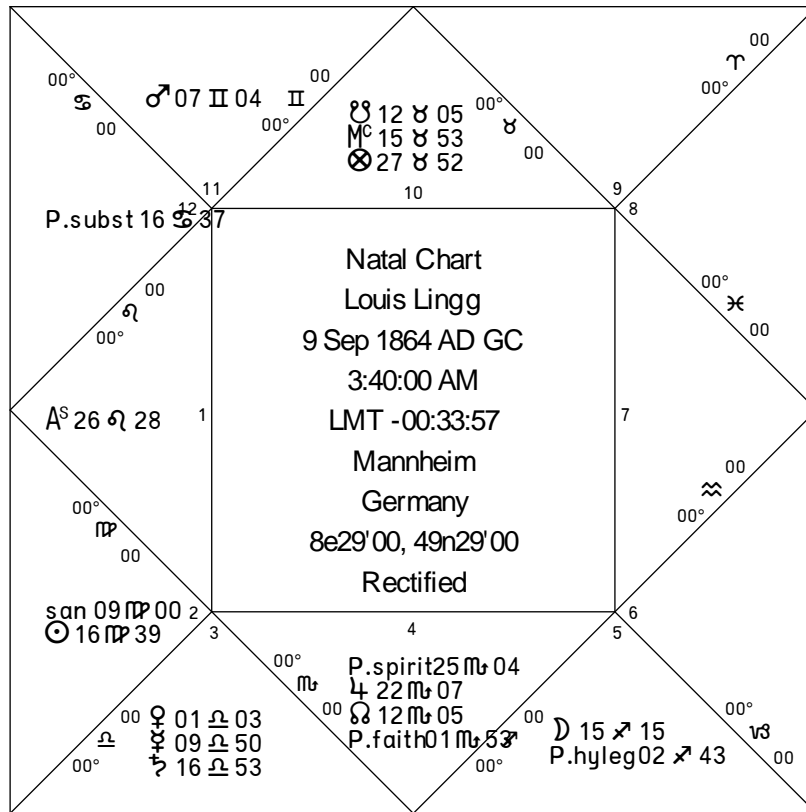
D	Venus/Virgo	P	Saturn (l=SA) d. → ASC	15-Apr-1898
D	Venus/Virgo	P	Saturn (l=0) d. → ASC	4-May-1899

Weak health dated from Spring 1899.

D	Jupiter/Aquarius	P	Uranus (l=0) c. → Sun	6-Jan-1901
---	------------------	---	-----------------------	------------

Exact day of death. Uranus 18AQ31 in the 8<sup>th</sup> house.

Giver of life is Sun; giver of years is Venus who grants 82 years. Mars receives Venus and though the sextile is slightly out of orb, deduction of Mars' 15 minor years nets 67 which is accurate. High scoring killers are Venus (42), Jupiter (34), Saturn (33), and Mercury (32). Also: 1900 solar return Mars opp. P. Death.



## Distributor: Mars/Taurus. Louis Lingg - Proposed Ascendant: 26LE28'31"

### Physiognomy

Lingg's face has the distinctive rectangular shape associated with fixed signs. Leo rises which is a match along with a pronounced outline on the upper lip, another Leo signature. Third decan of Leo rises, assigned to Aries, ruled by Mars/Gemini. Mars/Gemini is a less obvious physiognomy match.

### Configuration of Chart

His father's on-the-job injury and shameless treatment at the hands of his employer was a crucial moment in Lingg's development as a supporter of rights and wages for the working class. Lingg was a carpenter and upon arrival to America, quickly rose to leadership positions in labor unions, was arrested after the Haymarket Riot on conspiracy charges, and committed suicide by detonating a dynamite cap in his mouth in order to become a martyr for the cause of labor.

Delineating the Taurus-Scorpio axis as a pro- and anti-capitalistic philosophy is central to understanding the nativity of Louis Lingg. South Node in Taurus diminishes capitalism; placed in the 10<sup>th</sup>, Lingg's reputation is defined by his anti-capitalistic stance. This is augmented by Jupiter/Scorpio conjunct North Node in the 4<sup>th</sup> of the father.

Jupiter	+	Scorpio	=	?
philosophy	+	anti-capitalism	=	anarchism

As Jupiter's ruler, Mars is the source and outcome of Jupiter's actions. Mars/Gemini is placed in the 11<sup>th</sup> which signifies death of the father (8<sup>th</sup> from the 4<sup>th</sup>). Mars/Gemini signifies repetitive motion injuries, a possible match to his father's injury of falling into an icy river after trying to get a logjam moving again (needs more research to confirm). His father's injury caused Lingg to develop an anti-capitalistic philosophy signified by Jupiter/Scorpio; this in turn led Lingg back to his role as agitator in labor unions, another acceptable delineation of Mars/Gemini in the 11<sup>th</sup> of groups and organizations ruling the 6<sup>th</sup> of labor by exaltation.

SA	d.s.a. ASC conj Sun	28-Apr-1885
----	---------------------	-------------

Father agreed to give Lingg funds to move to America, Spring 1885 (no exact date). Sun (father) in the 2<sup>nd</sup> of wealth rules the 9<sup>th</sup> of foreign travel (exaltation).

SA	d.s.a. MC conj Mars	4-May-1886
----	---------------------	------------

Haymarket Riot, exact date. An incendiary explosion (Mars/Gemini) amidst a crowd of labor protestors (11<sup>th</sup> of groups) harms Lingg's reputation (direction to 10<sup>th</sup> cusp).

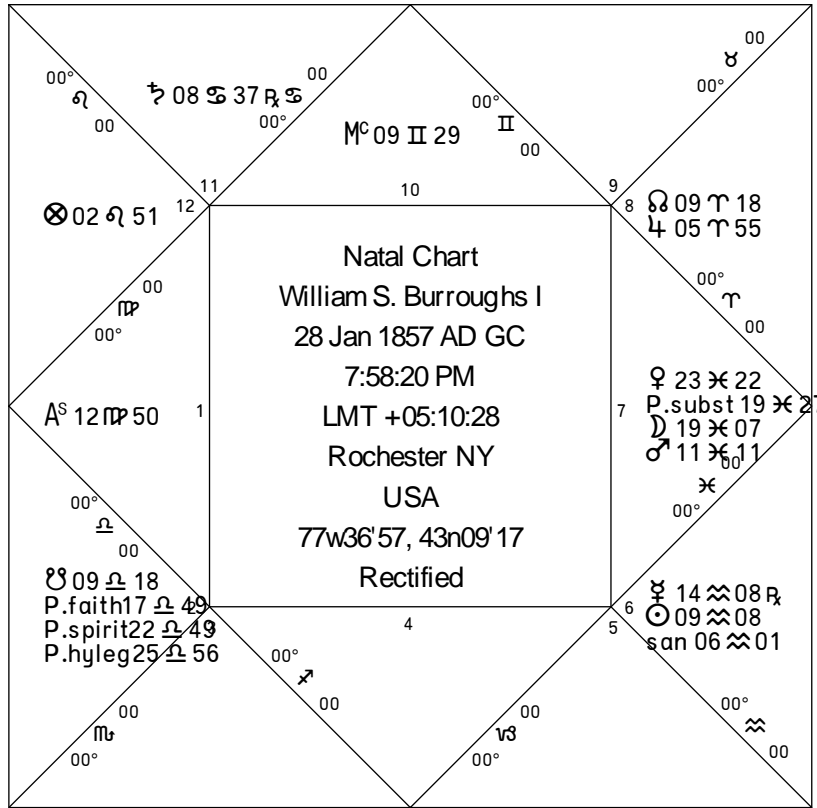
**Longevity: 23y 2m 1d.** Died 10-Nov-1887, Suicide.

Moon/Sagittarius/5<sup>th</sup> qualifies as giver of life. The two most likely candidates for giver of years are triplicity ruler Saturn and bound ruler Venus. None of these choices as giver of years indicate a lifespan as short as 23 years. Instead we must turn to the total solar eclipse of 8-Sep-1885, one day before Lingg's 9-Sep-1885 birthday and the solar year for Lingg which included the Haymarket Riot. Note for the eclipse chart (not shown) that Jupiter is partile conjunct the solar eclipse degree and rules the 8<sup>th</sup> natal house for Lingg. By al-mubtazz scoring, Jupiter is the 2<sup>nd</sup> high scoring killing planet after Mars.

D	Venus/Virgo	P	sin. trine South Node d. → ASC	20-Jun-1886
---	-------------	---	--------------------------------	-------------

D	Jupiter/Aquarius	P	Jupiter (l=MO) c. → Moon	24-Jun-1886
D	Jupiter/Aquarius	P	Jupiter (l=JU) c. → Moon	19-Jan-1888
D	Jupiter/Aquarius	P	Jupiter (l=0) c. → Moon	7-Aug-1888

Lingg's 21-Jun-1886 death sentence was timed by both South Node-ASC and Jupiter-Moon directions. Lingg committed suicide 10-Nov-1887 during the sequence. Pisces, sign of sacrifice, falls on the 8<sup>th</sup> cusp of death.



## **Distributor: Mercury/Gemini. William Burroughs - Proposed Ascendant: 12VI50'31"**

This is a high confidence rectification based on limited data.

### **Configuration of Chart**

Burroughs was known for anxiety over accuracy, match to Virgo's criticality as Ascendant ruler. Burroughs was a long-time bank clerk who worked long hours while searching for errors in manually-computed ledgers. This is a delineation match to Ascendant ruler Mercury retrograde (searching for errors), combust (suffering ill health from overwork), and in the 6<sup>th</sup> house (working in a subservient capacity to a larger employer). Part of Fortune/Leo/12th with ruler Sun/Aquarius placed in the 6<sup>th</sup> is consistent with gains from research funded by employees. This matches initial research funding provided by fellow co-workers.

### **Patent Award**

D	Venus/Cancer	P	Saturn (l=SA) d. → MC	9-Aug-1888
D	Venus/Cancer	P	Saturn (l=0) d. → MC	22-Aug-1888

Period leading up to and including award of patent for 'W. S. Burroughs Calculating Machine' on 21-Aug-1888.

### **Posthumous Measurement - 1986 Burroughs Merger**

Following the merger of Burroughs Corporation and Sperry Corporation in 1986, the new entity was renamed Unisys Corporation on 11-Nov-1986. For this date, tr. Jupiter 12PI59 and tr. Saturn 9SA33 were conjunct the 7<sup>th</sup> and 4<sup>th</sup> cusps respectively. Jupiter rules the 7<sup>th</sup> of partnerships and falls in the 8<sup>th</sup> of partner's money; 8<sup>th</sup> is also the stock market. Based on the ability of the previous Saturn direction to time Burrough's patent award, transit of Saturn to the IC signifies the end-of-the-road for his life research. Both Jupiter and Saturn transits are consistent with the end of one's professional career and cash received from a stock merger deal.

D	Jupiter/Leo	P	POF d. → North Node	14-Nov-1986
---	-------------	---	---------------------	-------------

Amazing is the ability of this primary direction, computed almost 90 years after Burrough's death, to time the corporate name change within 3 days.

**Longevity: 41y 7m 16d.** Died 14-Sep-1898.

Figure is nocturnal; Moon/Piceses/7<sup>th</sup> qualifies as giver of life. In her exaltation and triplicity, Venus is the planet with the highest number of essential dignities in the place of the Moon. As giver of years, Venus grants her 82 major years. South Node 9LI08 reduces 25% by conjunction with the antiscion of Venus 6LI38. Net projection is 61.5 years. There are no further allowable deductions. Mars-Venus and Saturn-Venus aspects are outside Bonatti's recommended moiety of orb. Burroughs lived fewer years. As one indication of a short life, Ascendant ruler Mercury combust in the 6<sup>th</sup> signifies illness from overwork.

D	Mercury/Taurus	P	dex. trine ASC d. → North Node	14-Sep-1898
---	----------------	---	--------------------------------	-------------

High scoring killing planets are Jupiter, Sun, Saturn, and Mars. Consistent with the ability of either Node placed in the 8<sup>th</sup> house trumping other killing planets is the Ascendant-Node direction for Burrough's death.



## Distributor: Jupiter/Gemini. Alexander Graham Bell - Proposed Ascendant: 10PI16'58"

Charlotte Gray, *Reluctant Genius: The Passionate Life and Inventive Mind of Alexander Graham Bell*, New York: Harper Collins Publishers Ltd., 2006.

### Configuration of Chart

Mercury/Pisces/1<sup>st</sup> ruling the 4<sup>th</sup> and 7<sup>th</sup> houses is the Ruler of the Chart. Pisces is a mute sign and signifies his deaf wife Mabel Hubbard; also Helen Keller. Biographer Gray suggests Alexander Graham Bell's affections for Helen Keller extended beyond that of a teacher-pupil relationship in ways which made his wife Mabel jealous of his time spent with Keller. It was Bell's knowledge of methods of teaching the deaf (following in the footsteps of his father) and his intellectual curiosity which led to his breakthrough of the telephone invention. The Mercury/Pisces – Jupiter/Gemini reception by rulership, with both planets in detriment, is a key configuration of the figure because Mercury rules the 4<sup>th</sup> and 7<sup>th</sup>; Jupiter the 1<sup>st</sup> and 10<sup>th</sup>. Bell required the assistance of his wife and her father-in-law in order to commercialize his inventions. The business side of his inventions held no interest for Bell.

### Measurements

D	Mars/Leo	P	sin. square POF (l=0) d. → Moon	11-Mar-1876
---	----------	---	---------------------------------	-------------

Speech is heard for the first time over the telephone. Bell: "Mr. Watson – Come here – I want to see you," 10-Mar-1876.

D	Jupiter/Libra	P	sin. square North Node d. → MC	30-Jun-1876
---	---------------	---	--------------------------------	-------------

Bell phone demonstration for foreign dignitaries at Philadelphia's Centennial Exhibition, 25-Jun-1876.

D	Venus/Cancer	P	sin. trine ASC (l=0) d. → Jupiter	10-Nov-1879
---	--------------	---	-----------------------------------	-------------

Western Union and Bell Telephone Company reach settlement; great victory for Bell, exact date.

D	Venus/Pisces	P	ASC (l=0) d. → Mars	24-Jul-1881
---	--------------	---	---------------------	-------------

Tried unsuccessfully to locate bullet inside body of President James Garfield, 26-Jul-1881.

D	Mercury/Cancer	P	opposition Mars (l=MA) c. → Moon	29-Nov-1878
---	----------------	---	----------------------------------	-------------

Illness, November 1878.

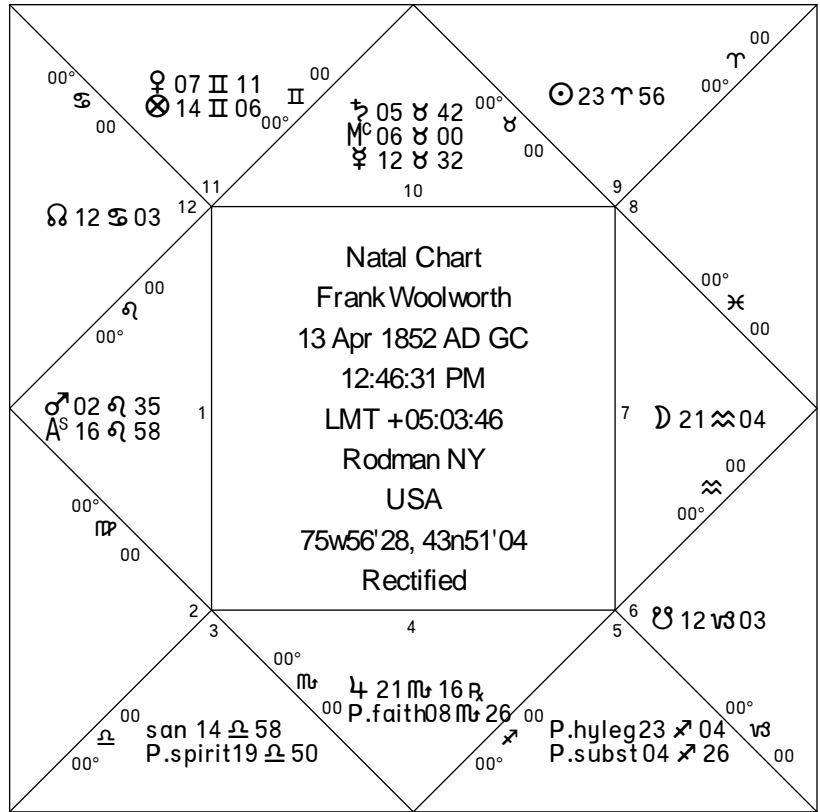
**Longevity: 75y 5m 0d.** Died 2-Aug-1922. Complications from diabetes.

Figure is nocturnal; Moon is preferred and qualifies as giver of life by position in the 7<sup>th</sup>. Moon's bound ruler Mars/Capricorn in the sign of his exaltation should be the giver of years and grant 66 years. Adjustments by Venus or Saturn by sextile are ineligible because aspects are outside moiety of orb. Empirically, Sun, Moon, and the Ascendant were attacked at death (not just the Moon) and Bell's longevity is a close match to Mercury's 76 major years. Mercury is the Ruler of the Chart and appears the figure's empirical giver of years.

D	Jupiter/Gemini	P	Jupiter (l=0) c. → Moon	31-Mar-1919
D	Jupiter/Gemini	P	Jupiter (l=JU) c. → Moon	31-Jan-1920
D	Jupiter/Gemini	P	Jupiter (l=MO) c. → Moon	14-Mar-1923

D	Jupiter/Sagittarius	P	dex. square Venus (l=VE) c. → ASC	10-Mar-1922
D	Jupiter/Sagittarius	P	dex. square Venus (l=0) c. → ASC	1-Jul-1924

Jupiter (42) and Venus (41) are the high scoring killers. The first direction links the high scoring killing planet with the giver of life. Other direction sequences active at the time of death also weaken the body. See also in the 1922 solar return prior to death, Jupiter 17LI38 is partile conjunct the Sun's antiscion; Venus aspects Sun by conjunction.



## Distributor: Venus/Gemini. F. W. Woolworth - Proposed Ascendant: 16LE58'16''

### Configuration of Chart

Moon in the 7<sup>th</sup> applying to Jupiter in the 4<sup>th</sup> (ruling the 5<sup>th</sup>) is a delineation match to Woolworth's children's divisive legal battles over his estate following his unexpected death in 1919. At the time of his death, a new will under consideration was left unsigned which meant an older dated will gave control of his estate to his wife who suffered mental illness. In the 12<sup>th</sup> house, or place of wife's illness, notice the Moon-ruled North Node increased the affairs of a bad house.

D	Venus/Libra	P	dex. trine Moon (l=JU) c. → Jupiter	25-Jun-1879
---	-------------	---	-------------------------------------	-------------

First successful store opened in Lancaster, PA, 21-Jun-1879.

SA	c.s.a. Venus trine ASC	22-Nov-1902
SA	d.s.a. ASC trine Venus	7-Apr-1904

These two Venus solar arc directions coincide with the end of the Venus/Gemini Distribution. As discussed in AIB Chapter 6, they include a special 25<sup>th</sup> anniversary celebration of Woolworth's first store opening in 1879. In addition, the 1904 direction timed the marriage of Woolworth's daughter Helena Maude to Charles E. F. McCann on 20-Apr-1904.

SA	c.s.a. MC square Venus	2-Jun-1911
SA	d.s.a. Venus square MC	5-Apr-1913

These two directions correspond with construction of the Woolworth's office building with financing obtained on 2-Aug-1911<sup>2</sup> and the official building opening on 24-Apr-1913.

SA	c.s.a. Sun conj Moon	5-Jun-1915
----	----------------------	------------

The Woolworth Building received an award from the Panama Pacific Exposition, 6-Jun-1915.

### Posthumous Measurements

D	Mars/Aries	P	sin. sextile Moon (l=MO) c. → ASC	19-May-1960
D	Mars/Aries	P	sin. sextile Moon (l=0) c. → ASC	1-Jul-1964

The Greensboro lunch counter was integrated on 25-Jul-1960 (following 1-Feb-1960 sit-in). Civil Rights Act of 1964 signed 2-Jul-1964.

D	Mars/Aquarius	P	Moon (l=MO) c. → ASC	16-Oct-1993
D	Mars/Aquarius	P	Moon (l=0) c. → ASC	23-Feb-1998

On 13-Oct-1993 Woolworth's announced closure of 970 stores including its Greensboro store, site of the 1960 lunch counter protest. As the sequence culminated, Woolworth's announced a name change to Venator on 2-Apr-1998.

**Longevity: 66y 11m 24d.** Died 8-Apr-1919.

Figure is diurnal, Sun/Aries in this sign of his exaltation and in the house of his joy qualifies as both the giver of life and giver of years. Sun grants his 120 major years. Nodes deduct 25% leaving 90 years. Woolworth lived fewer years. Mars and Saturn on the angles appear to override the Sun as giver of years. Though Saturn is closer to the MC degree, actual longevity is closer to Mars' 66 major years and suggests Mars is the empirical giver of years.

D	Jupiter/Aquarius	P	DSC c. → Sun	8-Apr-1919
---	------------------	---	--------------	------------

The proposed arcus vitae effectively moves the Sun to the 7<sup>th</sup> cusp, the place where it sets in the western sky.

---

<sup>2</sup> NYT, 'Obtains \$8,000,000 for Big Skyscraper,' p. 1.



## Distributor: Mars/Gemini. John D. Rockefeller - Proposed Ascendant: 19VI52'38"

Birth Time: compared to 10:00 AM reported by Astrodatbank, the proposed time is 10:05:34 AM.

### Measurements

SA	c.s.a. Neptune 24SA23 conj. Part of Death of Mother 24SA09
----	--

Death of mother, 28-Mar-1889.

SA	d.s.a. Saturn 8AQ42 conj Part of Father; 8AQ37
PROG	prog Moon 21SC14 conj antiscion of Part of Father; 21SC23

Death of father, 11-May-1906. Moon rules the 11<sup>th</sup>, or death of father.

D	Jupiter/Virgo	P	ASC (I=VE) d. → Venus	11-Apr-1864
D	Jupiter/Virgo	P	ASC (I=0) d. → Venus	24-Sep-1864

Marriage, 8-Sep-1864. Sequence times period leading up and including the wedding date.

D	Jupiter/Taurus	P	sin. sextile North Node c. → MC	10-Jan-1870
---	----------------	---	---------------------------------	-------------

Formed Standard Oil. Exact date.

SA	d.s.a. Sun conj ASC	11-Apr-1906
SA	c.s.a. ASC conj Sun	1-Jul-1906

Sun in 11<sup>th</sup> ruling the 12<sup>th</sup> signifies illicit business partnerships. On 19-Apr-1906, independent oil producers called on President Theodore Roosevelt to investigate the operations of Standard Oil.<sup>3</sup> On 23-Jun-1906, Roosevelt announced that Standard Oil would be prosecuted.<sup>4</sup>

D	Jupiter/Taurus	P	dex. square POF c. → MC	13-Jan-1870
D	Venus/Libra	P	sin. trine MC d. → POF	7-May-1911

To date I have never reported angle-angle directions such as the pair of MC-POF directions above. Yet consider that Standard Oil was formed on 10-Jan-1870 and it was broken up by the government on 15-May-1911.

**Longevity: 97y 10m 15d.** Died 23-May-1937. Myocarditis (hardening of heart muscles).

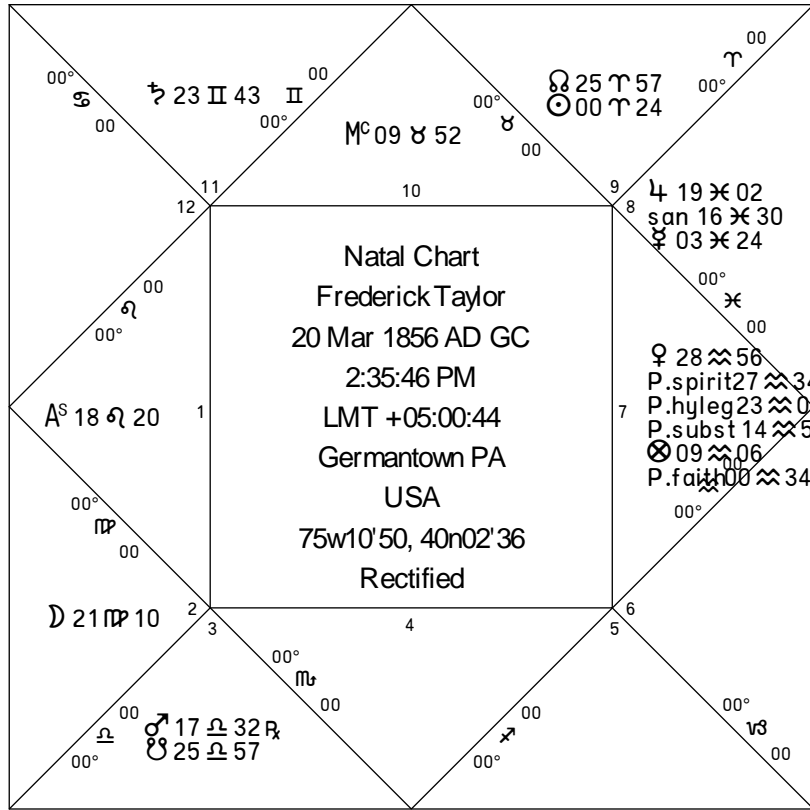
Figure is diurnal and Sun in 11<sup>th</sup> qualifies as giver of life. Exalted ruler Jupiter is the planet with the highest number of essential dignities in the place of the Sun; Jupiter also aspects by square. Jupiter gives his 79 major years which are augmented 25% by placement in the antiscion of the North Node. Gross projection is 98.75 years. This is accurate but Mars conjunct Jupiter within five degrees should deduct his 15 minor years. In practice, the Mars deduction did not occur. An alternate method of taking the Moon conjunct the MC as the giver of years does not work either. Trine from Mars and opposition from Saturn deduct too many years.

D	Mercury/Aries	P	dex. square Sun (I=0) c. → Mercury	25-May-1937
---	---------------	---	------------------------------------	-------------

High scoring killers are Mercury (37) and Jupiter (36). Arcus vitae joins the high scoring killer with the giver of life.

<sup>3</sup> NYT, 'Would Probe Standard Oil' Independent Operators in the West Appeal to the President,' April 19, 1906, p. 11.

<sup>4</sup> NYT, 'Standard Oil to be Prosecuted,' June 23, 1906, p. 1.



## **Distributor: Saturn/Gemini. Frederick Winslow Taylor - Proposed Ascendant: 18LE20'43"**

Kanigel, Robert. *The One Best Way: Frederick Winslow Taylor and the Enigma of Efficiency*, New York: Viking, 1997.  
Wrege, Charles D. and Ronald G. Greenwood. *Frederick W. Taylor: The Father of Scientific Management*, Homewood, IL.: Business One Irwin, 1991.

### **Configuration of Chart**

Any rectification for Taylor must demonstrate a clear connection between Taylor's *Scientific Management* and improved labor productivity. As proposed in Appendix C, Saturn/Gemini is the significator of *Scientific Management*. Placed in the 11<sup>th</sup> ruling the 6<sup>th</sup> of slaves means Taylor's good fortunes derive from application of *Scientific Management* to the workforce. Gains from malefics are bestowed with difficulty; for Taylor, his use of stop watches raised the ire of labor which was one factor why Taylor was summoned to testify before Congress, another 11<sup>th</sup> house signification.

With Capricorn on the 6<sup>th</sup> cusp, Mars is the house al-mubtazz. Mars/Libra retrograde signifies inefficient workers who delay production. South Node conjunct Mars signifies their elimination. The way out for workers is ruler Venus/Aquarius placed in the bound of Saturn/Aquarius in the 7<sup>th</sup>. By derived houses, the 7<sup>th</sup> is worker's money (2<sup>nd</sup> from the 7<sup>th</sup>). Venus/Aquarius is a delineation match to Taylor's system of differential wages which involved increased pay for higher production as a reward for higher productivity.

### **Measurements**

SA	c.s.a. South Node 12SA53 conj Part of Death of Mother; 13SA01	9-Mar-1904
----	---	------------

Death of Mother, 9-Mar-1904.

SA	c.s.a. POF trine North Node	30-Mar-1899
----	-----------------------------	-------------

Bethlehem Steel employees started to work under Taylor's differential rate system, exact date.

SA	d.s.a. POF conj Jupiter	11-Dec-1896
----	-------------------------	-------------

Promoted to position of Simond's shop manager and received appt. to the company's executive committee, 11-Dec-1896.

D	Jupiter/Taurus	P	dex. square ASC d. → Sun	18-Sep-1910
---	----------------	---	--------------------------	-------------

Death of father, 10-Sep-1910.

SA	d.s.a. Saturn conj ASC	25-Feb-1912
----	------------------------	-------------

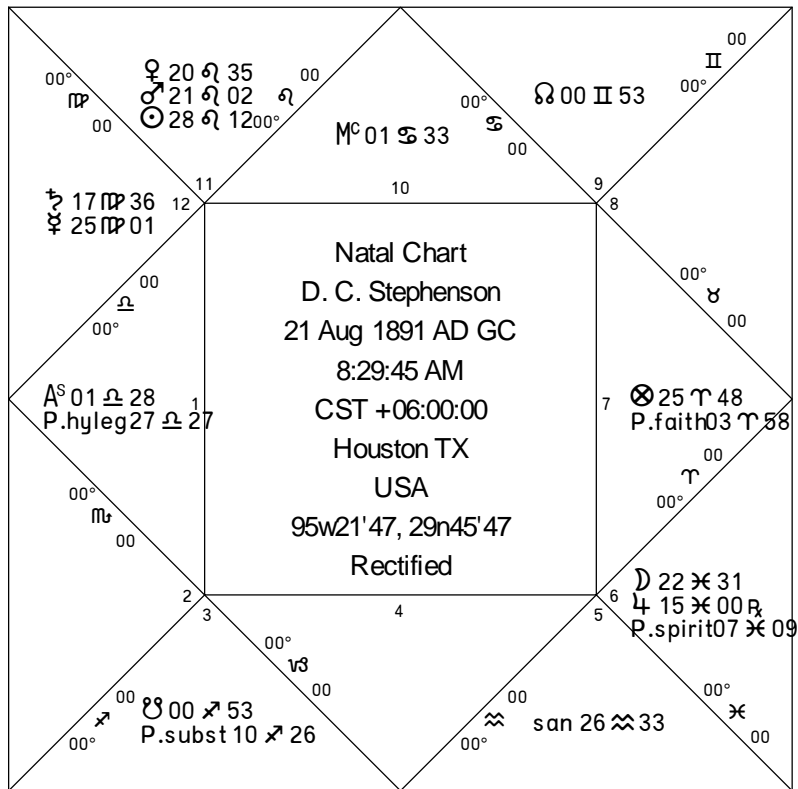
Testified before Congress on Scientific Management.

**Longevity: 59y 0m 0d.** Died 21-Mar-1915, pneumonia.

Sun/Aries/9<sup>th</sup> is in the sign of his exaltation and in the house of his joy trumps all other candidates for both the giver of life and the giver of years. Sun grants 120 years. Opposition from Mars is too wide to deduct years as is the sextile from Saturn. Taylor lived just shy of 60 years which is the halfway mark. Killers are Jupiter (53), Venus (46), and Mars (39).

SA	c.s.a. ASC square Jupiter	22-Feb-1915
----	---------------------------	-------------

This candidate for arcus vitae was 11 days before Taylor caught a cold on March 3, 1915 which developed into pneumonia. On March 3, 1915, see the converse transit of Venus, Mercury, and Jupiter conjunct natal Sun. Jupiter and Venus are the high scoring killing planets. Mercury falls in the 8<sup>th</sup> of death. Sun is the giver of life.



## Distributor: Mars/Cancer. D. C. Stephenson - Proposed Ascendant: 1LI28'56"

The Venus-Mars-Sun Leo stellium is the key to unlocking this figure.

- 1<sup>st</sup> house ruler Venus applying to 7<sup>th</sup> house ruler Mars signifies many sexual relationships.
- Venus and Mars combust makes sex titillating and unstoppable.
- Sun in the bound of Mars/Leo defines Stephenson's reputation as an 'enforcer.' Stephenson said 'I am the law in Indiana.'

These combined factors explain how Stephenson could rape and mutilate Madge Oberholtzer and think he could get away with the crime.

### Measurements

PROG	c. prog Moon 29AQ45 conj Part of Daughters; 29AQ32	16-May-1915
TR	c. tr. Jupiter 29AQ35 conj Part of Daughters; 29AQ32	16-May-1915

Birth of daughter Florence Catherine, 16-May-1915.

SA	c.s.a Moon opposed Mars	27-Jun-1924
----	-------------------------	-------------

Yacht blown up, exact date.

SA	d.s.a. Sun conj ASC	21-Nov-1925
----	---------------------	-------------

Started prison sentence, exact date.

SA	c.s.a. Sun square ASC	15-Dec-1950
----	-----------------------	-------------

Captured after violating parole by disappearing in September 1950, exact date.

SA	d.s.a. Mars 23VI39 conj Lot of Male Adultery 23VI59	15-Mar-1925
----	---	-------------

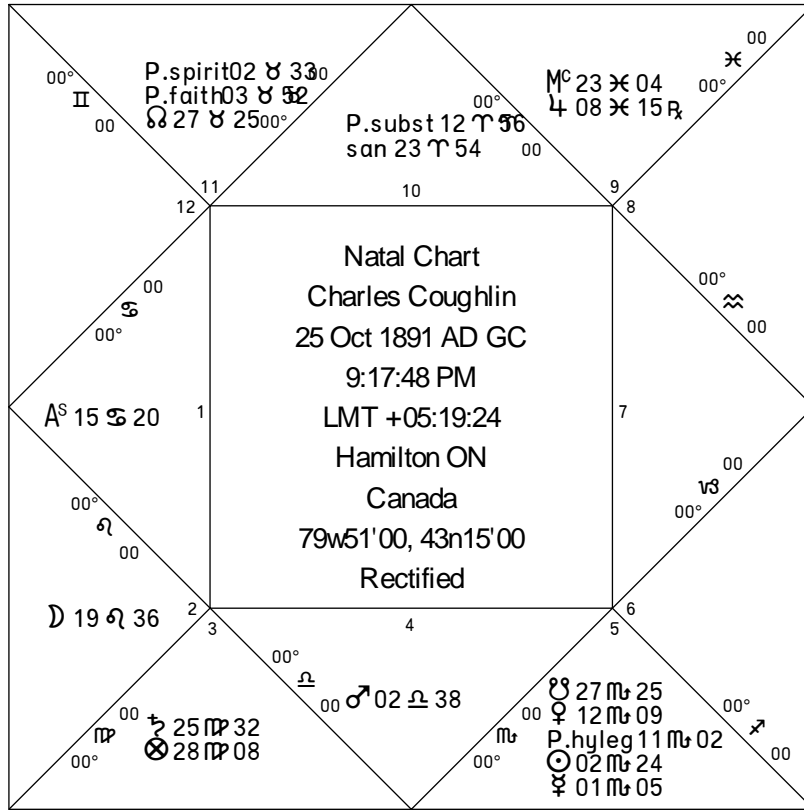
Rape and Mutilation of Madge Oberholtzer. What Valens calls the Lot of Marriage *a/c* Men is calculated by taking the distance between Venus and the Sun and projecting that distance from the Ascendant. Naming by later authors suggests this part is more about sex than about marriage. Ibn Ezra calls it the Lot of Male Adultery; Bonatti renames it the Part of cunning and craftiness of men toward women.

**Longevity: 74y 10m 7d.** Died 28-Jun-1966.

Figure is diurnal and Sun in 11<sup>th</sup> qualifies as giver of life but position on the 12<sup>th</sup> cusp by quadrant house cusps raises questions. If the Sun, then 120 years are given. Mars deducts 15 minor years with a net projection of 105. As an alternate projection, allocate 57 years based on Saturn as the Ruler of the Chart. If delineated as an accidental benefic (questionable with a 12<sup>th</sup> house placement, but...) Mercury conjuncts, receives, and adds his 20 minor years to Saturn. Net projection is 77 years.

D	Jupiter/Pisces	P	Jupiter (l=0) c. → sin. square Sun	16-Jun-1966	Ptolemy's method
D	Jupiter/Libra	P	sin. sextile Venus (l=0) d. → Sun	13-Jul-1966	Ptolemy's method

High scoring killers are Venus (36), Sun (32), Jupiter (30), and Saturn (30).



**Distributor: Mercury/Cancer. Charles Coughlin - Proposed Ascendant: 15CA20'45''**

Warren, Donald. *Radio Priest: Charles Coughlin the Father of Hate Radio*, New York: The Free Press, 1996.

SA	c.s.a. Moon conj ASC	26-Jun-1926
----	----------------------	-------------

Conducted first mass, exact date.

SA	c.s.a. DSC conj Sun	29-May-1966
----	---------------------	-------------

Announced retirement, 19-May-1966.

TR	c. tr. Uranus conj MC	19-Apr-1942
----	-----------------------	-------------

Attorney General Biddle informed the Postmaster General that Coughlin's Social Justice organization had disseminated propaganda, 14-Apr-1942; Biddle announced formation of Grand Jury to investigate Social Justice, 17-Apr-1942.

D	Jupiter/Leo	P	dex. square Sun (l=SA) c. → Saturn	3-May-1942
---	-------------	---	------------------------------------	------------

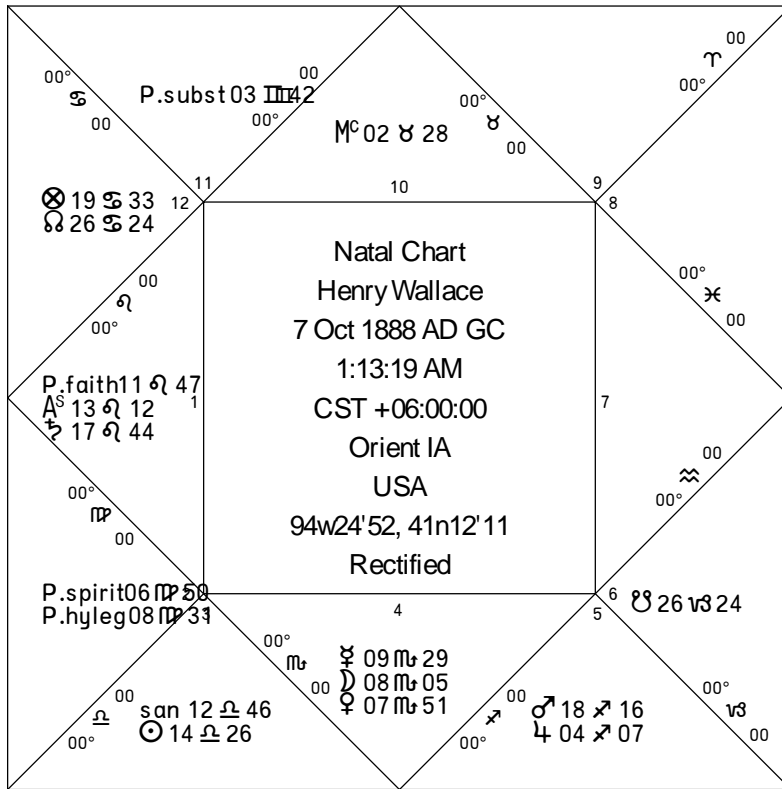
Postal service revoked mailing permit, 5-May-1942. Saturn falls in the 3<sup>rd</sup> (WS) of communications.

**Longevity: 88y 0m 29.** Died 27-Oct-1979. Heart attack, history of heart disease.

Figure is nocturnal and Moon/2<sup>nd</sup> qualifies as giver of life. Triplicity ruler Jupiter does not aspect the Moon but does aspect the Ascendant. Assume Jupiter grants his 79 major years. Opposition from Saturn is too wide to deduct years. Trine from Venus adds years. How many? Though Venus is in detriment, she is moving fast away from the Sun and is not yet within orb of the South Node. Venus is in generosity with Mars/Libra. Venus also receives Jupiter by exaltation, triplicity, and bound. If these conditions are sufficient to rescue Venus in detriment to function as giver of years, assume Venus adds her 8 minor years (assuming no addition for middle years). Net projection is 87 years.

D	Mars/Scorpio	P	Sun (l=MO) d. → Moon	2-Jun-1978
D	Mars/Scorpio	P	Sun (l=0) d. → Moon	24-Nov-1979

High scoring killing planets are Venus (43), Mars (33), and Jupiter (33). Coughlin died during this Sun-Moon sequence. Recall that Sun conjunct Moon primary directions signify a New Moon with no light. The image of a candle being snuffed out is appropriate.



## **Distributor: Jupiter/Cancer: Henry Wallace - Proposed Ascendant: 13LE12'15''**

The proposed figure departs significantly from the Roden A-rated time of 7:12 PM, from memory. The 7:12 PM chart features Taurus rising (19TA12) and a Capricorn Midheaven (28CP34).

Wallace was a farmer and came from a family of farmers. His followed the footsteps of his father in the position of Secretary of Agriculture. Both figures feature Taurus on either the ASC or MC which is consistent with land-based agriculture. But the 7:12 PM chart places Saturn/Leo in the 4<sup>th</sup> whole sign house. This is a fairly sterile placement, reminiscent of the desolate Dakota Badlands if Saturn/Leo in Teddy Roosevelt's figure is any guide. This is a complete mismatch to Wallace's family heritage as well as his own experiments in crop genetics which is a better match to the Mercury-Moon-Venus Scorpio stellium in the 4<sup>th</sup> (e.g., think Scorpio = research into the secrets of life).

Wallace's reputation took a beating when his letters to Russian theosophist Nicholas Roerich were published. Roerich's natal chart (b. 9-Oct-1874) features a Moon-Jupiter-Sun Libra stellium. For the 1:13 AM chart, Sun/Libra/3<sup>rd</sup> ruling the 9<sup>th</sup> of religion by exaltation is a match to Roerich. Letters are assigned to the 3<sup>rd</sup> house where the Sun is positioned.

### **Death of father, 25-Oct-1924**

D	Mercury/Cancer	P	dex. square Sun. c. → ASC	25-Oct-1924
---	----------------	---	---------------------------	-------------

SA	c.s.a. Neptune 26AR47 conj Part of Death of Father 26AR49
----	---

PROG	Prog. Mercury 2SC21 conj IC
------	-----------------------------

Sun signifies the father; Neptune is placed in the 11<sup>th</sup> (8<sup>th</sup> from the 4<sup>th</sup>), and Mercury rules the 11<sup>th</sup>.

### **'Century of the Common Man' speech, 8-May-1942**

D	Jupiter/Leo	P	sin. square MC (l=0) d. → Pluto	5-May-1942
---	-------------	---	---------------------------------	------------

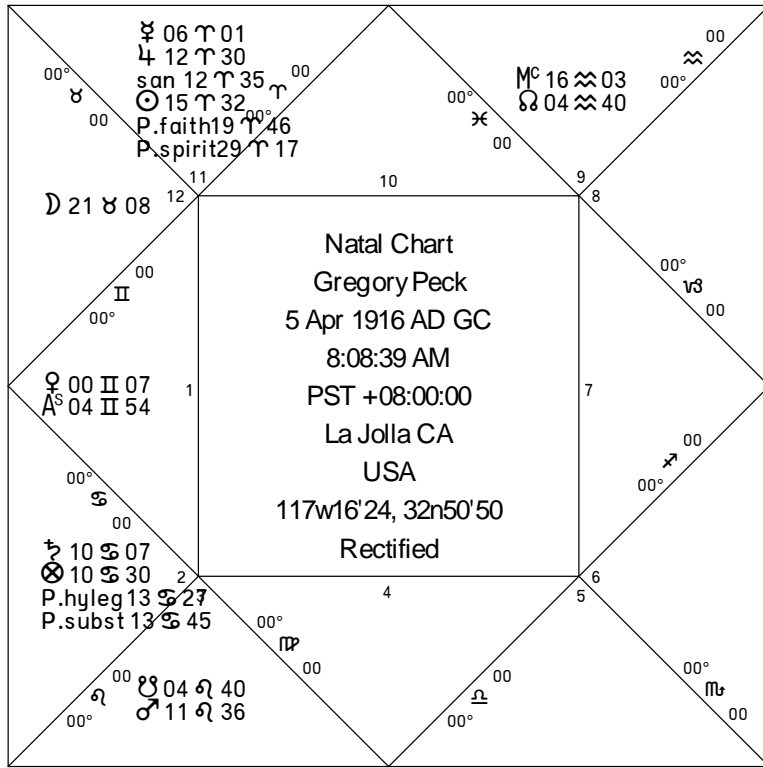
Wallace's most famous speech resulted in a book of the same name published in 1943. Despite its public popularity, it alienated Wallace from many alliances including national Democratic leaders, Winston Churchill, and other businessmen. Pluto falls on the cusp of the 11<sup>th</sup> of alliances.

**Longevity: 77y 1m 11d.** Died 18-Nov-1965.

Figure is nocturnal and Moon is preferred as giver of life. Yet with none of the Moon's rulers having any dignity, Sun/Libra is the next candidate. Sun's bound ruler Jupiter is in his own sign and sextiles the Sun. Sun is the giver of life and Jupiter is the giver of years. Jupiter grants 79 years. Conjunction from Mars is too wide for Mars to deduct years as is the trine from Saturn.

D	Saturn/Leo	P	ASC (l=MO) c. → Moon	20-Nov-1965
---	------------	---	----------------------	-------------

High scoring killers are Jupiter (58) and Saturn (28). Involvement of the Moon in the proposed arcus vitae suggests the Moon has some merit as the giver of life despite the textbook disqualification.



**Distributor: Saturn/Cancer. Gregory Peck - Proposed Ascendant: 4GE54'23''**

D	Venus/Aquarius	P	opposition Mars (l=MA) c. → MC	10-Jul-1921
---	----------------	---	--------------------------------	-------------

Mother filed for divorce a second time, 19-Jul-1921.

T	Venus conj DSC			28-Oct-1938
---	----------------	--	--	-------------

Official acting debut in the play *Rain from Heaven*, 28-Oct-1938.

T	North Node 16SA06 sextile MC			31-Dec-1955
---	------------------------------	--	--	-------------

Divorce and Marriage, 31-Dec-1955.

D	Venus/Aries	P	Mercury (l=0) d. → MC	12-Apr-1963
---	-------------	---	-----------------------	-------------

Won Oscar for performance in *To Kill a Mockingbird* as Atticus Finch, 8-Apr-1963.

D	Mercury/Gemini	P	ASC (l=NE) c. → Neptune	28-Jun-1975
---	----------------	---	-------------------------	-------------

Son Jonathan Peck committed suicide, 27-Jun-1975.  
Neptune is conjunct the antiscion of Venus which rules the 5<sup>th</sup> of children.

D	Venus/Gemini	P	sin. trine MC (l=0) c. → Mars	1-Jul-1976
---	--------------	---	-------------------------------	------------

US release of *The Omen*, 25-Jun-1976.

D	Mercury/Aries	P	Sun d. → North Node	27-Oct-1987
---	---------------	---	---------------------	-------------

Bork Supreme Court nomination rejected, 23-Oct-1987.  
Peck was the voiceover for a nationwide advertising campaign against the Bork nomination.

D	Saturn/Leo	P	sin. trine Sun d. (l=0) → d. Venus	9-Sep-2001
---	------------	---	------------------------------------	------------

Marriage of daughter Cecilia, September 8, 2001.

**Longevity: 87y 2m 7d.** Died 12-Jun-2003 while asleep for no apparent reason other than old age.

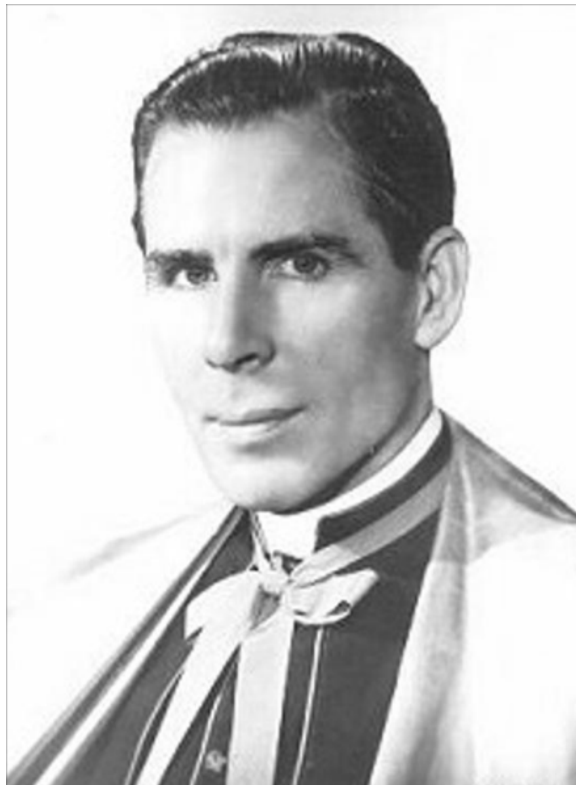
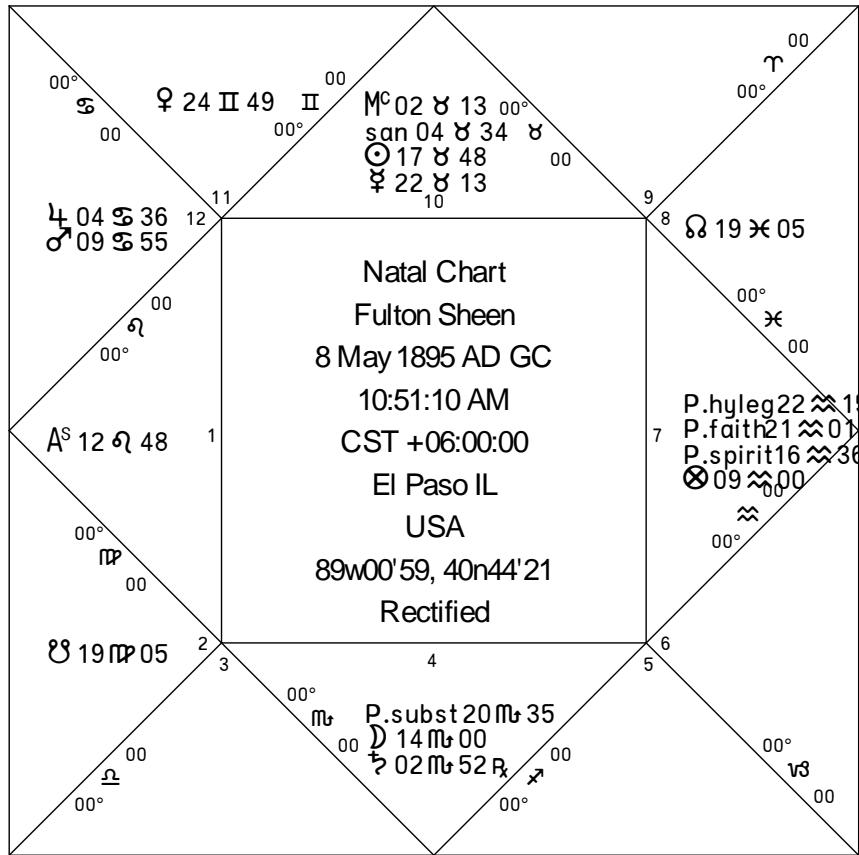
This is an unusual case where the Sun in his exaltation is the giver of life, giver of years, and the high scoring killing planet. Secondary killers are Jupiter and Mars. If Sun gives his 120 major years, then the square from Saturn deducts 30 for a net of 90. This is a reasonable match, but only if we ignore the possibility that Jupiter adds years by conjunction. Perhaps Jupiter's combustion rules out this possibility.

D	Jupiter/Taurus	P	Moon (l=0) c. → Mars	10-May-2002
---	----------------	---	----------------------	-------------

D	Jupiter/Taurus	P	Moon (l=MA) c. → Mars	3-May-2003
---	----------------	---	-----------------------	------------

D	Venus/Cancer	P	Saturn (l=SA) c. → Vertex	12-Jun-2003
---	--------------	---	---------------------------	-------------

The Moon-Mars primary direction sequence comes up a bit short. The Saturn-Vertex measurement is exact for the day of death. Though Saturn is not a high scoring killer, he does rule the 8<sup>th</sup> whole sign house. Elsewhere, consider in the 2003 solar return prior to death that both Jupiter and Mars aspect and receive the Sun. Jupiter and Mars are the 2<sup>nd</sup> and 3<sup>rd</sup> high scoring killers after the Sun itself.



## Distributor: Jupiter/Leo. Proposed Ascendant: 12LE48'45"

Reeves, Thomas. *America's Bishop: The Life and Times of Fulton J. Sheen*. Encounter Books, 2001.

SA	c.s.a. Nodes square MC	27-Mar-1943
----	------------------------	-------------

Death of Mother, 28-Mar-1943.

SA	d.s.a. Nodes square ASC	10-Jun-1951
----	-------------------------	-------------

Ordination, 11-Jun-1951.

D	Venus/Taurus	P	MC (l=0) c. → Jupiter	15-Feb-1952
D	Venus/Taurus	P	MC (l=JU) c. → Jupiter	11-Mar-1952

Debut of TV series *Life is Worth Living*, 12-Feb-1952; TIME cover, 14-Apr-1952.

D	Venus/Pisces	P	dex. trine Mars (l=MA) c. → Sun	27-May-1955
---	--------------	---	---------------------------------	-------------

Refused to honor Archbishop Spellman's request of funds from the Society for Propagation of the Faith, 25-May-1955.

D	Venus/Cancer	P	Mars (l=0) d. → MC	12-Feb-1966
D	Venus/Taurus	P	Mars (l=MA) d. → MC	27-Mar-1966

SA	d.s.a. Mars trine Sun	14-Apr-1966
----	-----------------------	-------------

Dispute with Archbishop Spellman during the Mars-MC sequence. Resulted in Sheen's summons to Rome on 13-Apr-1966 where he learned of his transfer to Rochester, an effective demotion orchestrated by Spellman. Note the public nature of the Mars trine Sun solar arc relative to the private nature of the same measurement computed by primary directions.

D	Saturn/Cancer	P	Eq-ASC (l=0) d. → opposed Uranus	16-Jan-1969
---	---------------	---	----------------------------------	-------------

Slipped on ice and broke left arm, 15-Jan-1969.

**Longevity: 84y 7m 2d.** Died 9-Dec-1979.

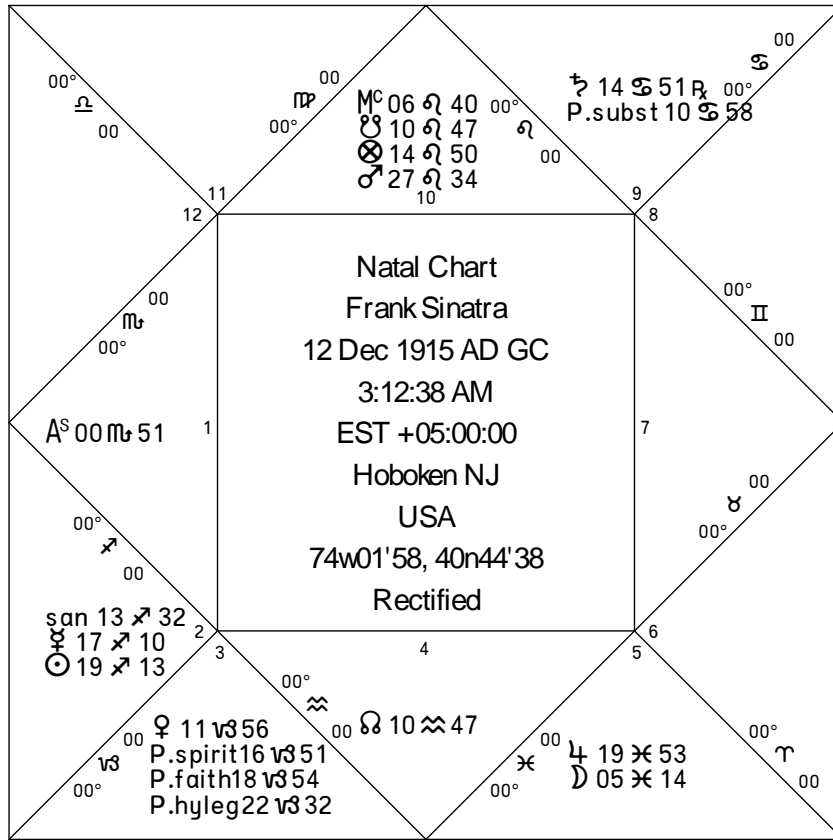
Following open heart surgery on 15-Jul-1977 and prostate surgery in mid-August 1977, Sheen's health had deteriorated. Death was expected; Sheen made out his will on December 4. Figure is diurnal and Sun in the 10<sup>th</sup> qualifies as the giver of life. Though the Sun's bound ruler Jupiter is in his exaltation and sextiles the Sun, the better choice for giver of years is the Sun's sign ruler Venus. Venus is oriental and is in generosity with Mercury. Venus gives her 82 major years.

D	Saturn/Leo	P	ASC (l=MO) c. → Moon	14-Jul-1977
---	------------	---	----------------------	-------------

Open heart surgery, 15-Jul-1977.

D	Mercury/Aquarius	P	sin. square Saturn (l=SA) d. → Moon	5-Jan-1980
---	------------------	---	-------------------------------------	------------

Jupiter (34), Moon (31), and Venus (27) are the high scoring killers. Moon appears to be the empirical giver of life despite theory which favors the Sun. Sheen's 1977 open heart surgery was timed by an ASC-Moon direction at age 82y 2m 7d just past Venus' 82 major years. This confirms that Sheen's lifespan was extended only through medical intervention.



## Distributor: Venus/Leo. Frank Sinatra - Proposed Ascendant: 00SC51'21"

Levy, Shawn. *Rat Pack Confidential*. New York: Broadway Books, 2001.

Kelley, Kitty. *His Way: An Unauthorized Biography of Frank Sinatra*. Bantam, 1986.

Compared to the 3:00 a.m. reported chart with late Libra rising, the proposed figure features the first degree of Scorpio rising. The choice of Scorpio matches Sinatra's legendary grudges held against friends, associates, and enemies. As one example, consider the 50 year long grudge held against his godfather. As a youth, Frank's mother Dolly asked Frank's godfather Frank Garrick to hire Sinatra. Garrick arranged for Sinatra to work in the circulation department. Shortly thereafter a sports writer for the same paper was killed. Seeing an opportunity for advancement, Sinatra seated himself at the dead boy's desk, acted as if he were the boy's replacement, and when asked by the editor about his position - Sinatra responded that his godfather Garrick had hired him for the position. When the editor confronted Garrick about the situation, Garrick was forced to fire Sinatra. For this affront against his honor, Sinatra refused to speak to his godfather for 50 years. Dolly Sinatra: "My son is like me. You cross him and he never forgets" (Kelley, pp. 28-29). Scorpio rises.

D	Mercury/Cancer	P	Saturn (l=SA) c. → MC	13-Dec-1938
---	----------------	---	-----------------------	-------------

Arrested on morals charges, 27-Nov-1938 and 23-Dec-1938.

D	Venus/Cancer	P	opposition Venus (l=0) c. → MC	16-Jan-1942
---	--------------	---	--------------------------------	-------------

First recording session which included 'Night and Day,' 19-Jan-1942.

D	Venus/Taurus	P	ASC (l=MO) d. → opposition Moon	20-May-1975
---	--------------	---	---------------------------------	-------------

Engaged to Barbara Marx, 18-May-1975.

For other marriages, compare these measurements to the Part of Marriage of Men a/c Hermes 27AR55:

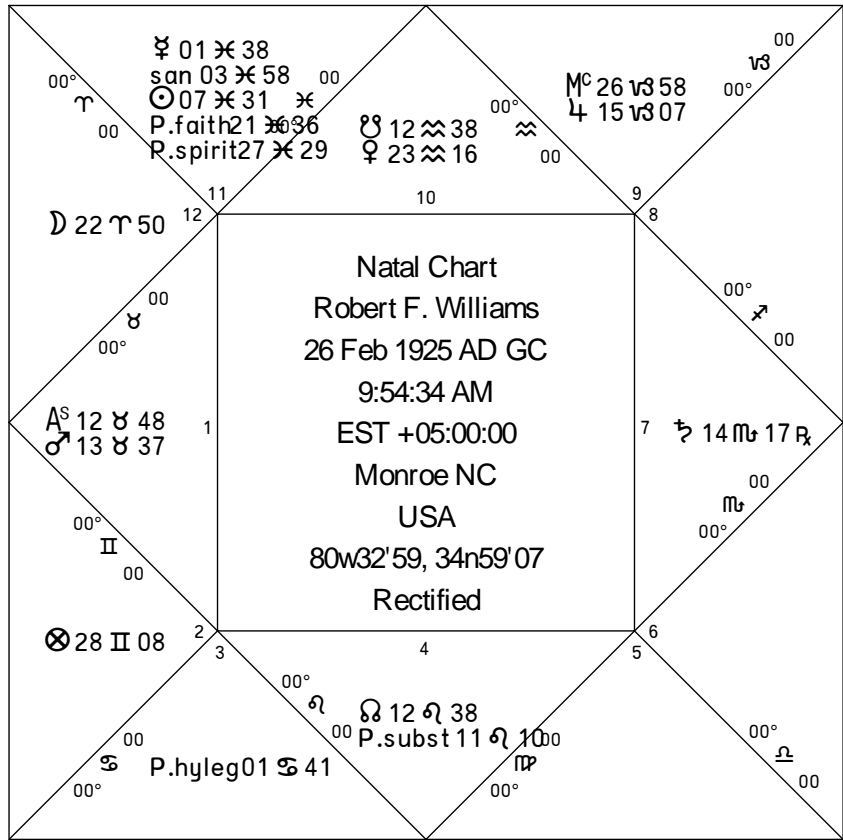
<u>4-Feb-1939.</u>	c.s.a. Moon 27AR30.	Married Nancy Barbato.
<u>11-Mar-1958.</u>	c. tr. Neptune 28AR07.	Proposed marriage to Lauren Bacall.
<u>19-Jul-1966.</u>	d.s.a. Moon 26AR44.	Married Mia Farrow.

**Longevity: 82y 5m 2d.** Died 14-May-1998, 10:50 PM, Los Angeles, CA. heart attack.

Figure is nocturnal and Moon in the 5<sup>th</sup> qualifies. The Moon's sign ruler and the Ruler of the Chart, Jupiter is the giver of years and grants 79 years. Trine from Saturn does not deduct 30 years because Saturn does not receive any of Jupiter's dignities. Sextile from Venus should add at least her 8 minor years; perhaps the Venus-Saturn opposition is too much of an affliction for Venus to add years. Sticking with Jupiter's 79 major years is reasonable. Consider Sinatra made his last public singing appearance on 25-Feb-1995 at age 79y 2m 15.

D	Mercury/Sagittarius	P	dex. square Jupiter (l=MO) c. → Moon	9-Feb-1998
---	---------------------	---	--------------------------------------	------------

Saturn (39), Mars (30), and Jupiter (27) are high scoring killers. Mercury rules the 8<sup>th</sup> of death. By converse motion, Mars moved to the Ascendant and Saturn moved to the Descendant in early 1996. But this Jupiter-Moon primary direction appears the most logical arcus vitae based on the Moon's designation as the giver of life. The 9-Feb-1998 date begins a sequence which includes 25-Mar-1999 and concludes 28-Nov-1999. Consider also that by converse primary motion the Sun is directed to the Moon in the fall of 1999. This essentially forms a New Moon which snuffs out the Moon's light.



## Distributor: Saturn/Leo. Robert F. Williams - Proposed Ascendant: 12TA49'18"

Tyson, Timothy B. *Radio Free Dixie: Robert F. Williams & the Roots of Black Power*. Chapel Hill: University of North Carolina Press, 1999.

### Configuration of chart

A grand square of Mars/Taurus, Saturn/Scorpio, and the Nodes dominates the figure. The configuration signifies pent up rage which is obstructed by a paranoid government desirous of excessive security measures; a conflict made very public through amplification by the Nodes. Moon's separation from Jupiter and application to Venus softens the conflict by introducing a humanitarian sense of sociability. Venus is also the Ruler of the Chart and the guardian angel (11<sup>th</sup> house al-mubtazz). Though Williams was subject to intensive investigation and threat of arrest by various government agencies, Williams proved far less an actual threat than later members of the Black Panther Party spawned by his philosophy.

D	Mars/Capricorn	P	conj. Sun c. → MC	11-Dec-1958
---	----------------	---	-------------------	-------------

Formed Committee to Combat Racial Injustice (CCRI). Exact date.

D	Jupiter/Libra	P	Vertex (I=0) d. → opposition Mercury	12-Feb-1959
---	---------------	---	--------------------------------------	-------------

Boys accused of kissing white girls released from prison, 13-Feb-1959.

SA	d.s.a. Sun square Pluto	5-May-1959
----	-------------------------	------------

Made statement: "Meet violence with violence," Exact date.

D	Mars/Pisces	P	conj. Uranus (I=0) c. → ASC	1-Mar-1960
---	-------------	---	-----------------------------	------------

Lunch counter protest in Monroe, NC, exact date; followed tactics of Woolworth sit-in demonstration.

SA	d.s.a. Sun trine North Node	10-Jun-1960
----	-----------------------------	-------------

Traveled to Cuba, summer 1960.

D	Saturn/Aries	P	sin. square MC d. → Sun	26-Jun-1961
---	--------------	---	-------------------------	-------------

Violence peaks after attempt to integrate Monroe Country Club swimming pool. Attempted assassination on the road, June 23; narrowly escaped death from gunfire in heated exchange, June 25; wife Mabel held off police with shotgun, June 29.

SA	d.s.a. South Node sextile MC	4-Nov-1969
----	------------------------------	------------

Resigned from RAM/RNA, November 1969.

**Longevity: 71y 7m 18d.** Died 15-Oct-1996. Hodgkin's disease.

Figure is diurnal and Sun in the 11<sup>th</sup> qualifies as the giver of life. With so few planets having any essential dignities in the place of the Sun (or anywhere else in the chart), it appears the two most logical candidates for the giver of years are Venus (Ruler of the Chart) or Mars (conjunct the Ascendant within 2 degrees). Mars appears to be the better choice. Mars grants his 66 major years augmented by 25% from placement in the North Node's antiscion. From this gross figure of 82.5 years, Saturn deducts its 30 minor years and by square aspect Venus adds its 8 minor years and 82 days for its major years. The net projection is roughly 60 years 9 months. Technically Jupiter in detriment should not add its 12 minor years through its trine aspect to Mars; but if it does, the solution of 72 years 9 months is a close match.

D	Mars/Aries	P	dex. sextile Venus d. → Sun	17-Oct-1996	Ptolemy's Method
---	------------	---	-----------------------------	-------------	------------------

Venus and Saturn are the high scoring killers; Sun is the giver of life.



## Distributor: Mars/Leo. Laurence Tureaud, a.k.a. “Mr. T” - Proposed Ascendant: 24SC52’38”

Tureaud, Laurence. *Mr. T: The Man with the Gold: An Autobiography*. New York, NY.: St. Martin’s Press, 1984.

### Configuration of Chart

Mars/Scorpio angular in the 1<sup>st</sup> conjunct the POF dominates the figure and forms a grand square with the 7<sup>th</sup> house Taurus stellium. Square by the Nodes amplifies the configuration, to the benefit of Tureaud. See that Mars, Ruler of the Chart, is strengthened by placement in the antiscion of the North Node. Similarly, Venus - ruler of the 7<sup>th</sup> - is weakened by placement in the antiscion of the South Node. See previous chart of Robert F. Williams for a similar grand square.

For an example of what a Mars/Scorpio/1<sup>st</sup>-retrograde opposed to Venus/Taurus/7<sup>th</sup> conflict looks like, see the videos created for Mr. T’s ‘Get Some Nuts’ campaign for Snickers candy bars: <http://getsomenuts.tv/>

### Measurements

SA	d.s.a. Mars conj ASC	28-Oct-1975
----	----------------------	-------------

Moved to Ft. Jackson, SC for training in the Military Police division of the National Guard, November 1975.

D	Saturn/Scorpio	P	ASC (l=0) d. → Mars	20-Apr-1980
D	Saturn/Scorpio	P	ASC (l=MA) d. → Mars	27-May-1980

SA	d.s.a. Mars opposed Sun	4-Nov-1980
SA	c.s.a. Sun opposed Mars	19-Jul-1980

Both ASC-Mars and Mars-Sun direction pairs timed Tureaud’s victories on the TV show *America’s Toughest Bouncer*.

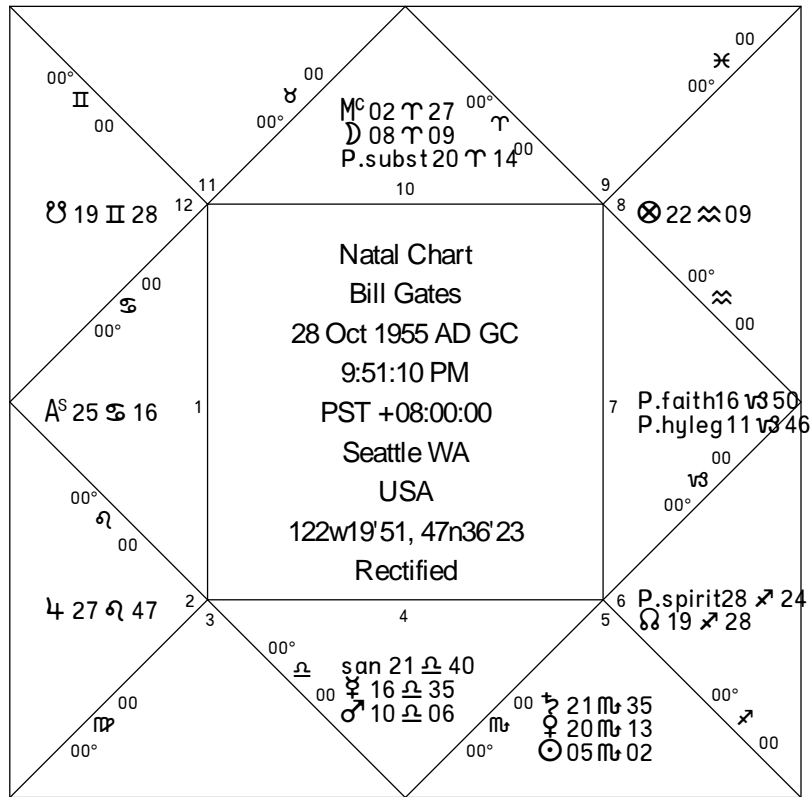
2-Feb-1980      Asked to appear on *America’s Toughest Bouncer*.  
26-Mar-1980    Competed and won contest, show taped.  
27-Apr-1980    Contest of 26-Mar-1980 aired on television.  
10-Jun-1980    Informed of invitation to compete at regional level.  
16-Jul-1980    Competed and won regional contest.  
7-Aug-1980     Competed and won national contest.  
Oct-1980        Contacted by casting agent for Rocky III, Rhonda Young.

D	Mars/Scorpio	P	Mars (l=MA) c. → ASC	30-Mar-1981
D	Mars/Scorpio	P	Mars (l=0) c. → ASC	2-May-1981

Sequence begins on the exact day of Reagan’s assassination attempt. Mars rules the 5<sup>th</sup> house cusp (Alchabitius) which signifies death of the King. As a more direct match for Tureaud’s life affairs, filming for Rocky III occurred during April and May 1981. 5<sup>th</sup> is also recreation/entertainment.

SA	c.s.a. POF conj Saturn	12-Jun-1979
SA	d.s.a. Saturn conj POF	19-Sep-1979

This solar arc quasi-sequence timed legal problems with the IRS and the National Guard starting in July 1979. A 10-Aug-1979 court date was postponed for 19-Sep-1979 (exact direction hit). All charges were eventually dropped.



## Distributor: Mercury/Virgo. Bill Gates - Proposed Ascendant: 25CA16'43''

Birth Time. Astrodatbank reports 10:00 p.m. Proposed time is 9:51:10 PM.

TR	c. tr. Saturn 22AQ07 conj POF 22AQ08	26-Nov-1979
----	--------------------------------------	-------------

Bill Gates trademarks the Microsoft name.

D	Mercury/Leo	P	dex. trine North Node d. → ASC	30-May-1988
---	-------------	---	--------------------------------	-------------

Microsoft announced new versions of Word and Excel designed for Apple McIntosh computer users, 1-Jun-1988.

D	Mars/Pisces	P	sin. square North Node d. → POF	23-Apr-1990
---	-------------	---	---------------------------------	-------------

Microsoft announced plans to increase their staff by 20%, 23-Apr-1990. North Node in 6<sup>th</sup> increases employees.

SA	d.s.a. South Node conj ASC	19-May-1991
----	----------------------------	-------------

Microsoft announced the termination of its OS/2 operating system partnership with Microsoft, 16-May-1991.

D	Mars/Aquarius	P	POF (l=0) c. → Moon	29-Aug-1995
---	---------------	---	---------------------	-------------

Launch of Windows 95 and MSN, 25-Aug-1995.

D	Jupiter/Cancer	P	ASC d. → South Node	31-Aug-1996
---	----------------	---	---------------------	-------------

On 29-Aug-1996, Novell Chair and CEO Robert Frankenberg resigned. Novell had failed to keep pace with Microsoft's internet applications. South Node in the 12<sup>th</sup> signifies destruction of enemies.

D	Venus/Libra	P	sin. square ASC c. → North Node	31-Jul-1997
---	-------------	---	---------------------------------	-------------

Perot Systems Corporate President and CEO James A. Cannavino announced his resignation on 25-Jul-1997. Cannavino was a long time rival of Bill Gates. Separately, on 29-Jul-1997, the FTC announced they rebuffed a request from Congress to make a new antitrust inquiry against Microsoft.

D	Venus/Libra	P	dex. trine POF c. → North Node	19-Jun-1999
---	-------------	---	--------------------------------	-------------

Release of film 'Pirates of Silicon Valley' on 20-Jun-1999.

**Antitrust Actions.** Mars, ruler of the 10<sup>th</sup> of the government, has consistently timed major antitrust actions.

D	Jupiter/Scorpio	P	dex. square POF (l=0) d. → Mars	2-Oct-1993
D	Jupiter/Scorpio	P	dex. square POF (l=MA) d. → Mars	28-Feb-1994

Timed first FTC case opened on 21-Aug-1993 and settled on 15-Jul-1994.

D	Mercury/Leo	P	opposition POF (l=MA) c. → Mars	8-Mar-1998
D	Mercury/Leo	P	opposition POF (l=0) c. → Mars	25-Aug-1998

Corresponded to launch of FTC antitrust case on 18-May-1998 and start of Microsoft trial 19-Oct-1998.

D	Jupiter/Capricorn	P	sin. square Mars (l=MA) c. → POF	8-Feb-2007
D	Jupiter/Capricorn	P	sin. square Mars (l=0) c. → POF	21-Jan-2008

EU's fine, 12-Jul-2006; Microsoft's lost appeal, 17-Sep-2007; additional EU fine on 27-Feb-2008.

# Photo Credits

All photographs have been sourced through the internet, primarily through Wikipedia and the Wikipedia Commons which uphold high standards of copyright provision. Should any copyright holder dispute the right of reproduction in this free-of-charge publication, please contact the author through the website [www.regulus-astrology.com](http://www.regulus-astrology.com) and the disputed images will be promptly removed.

## **Minnie Hauk**

Source: Collector's postcard, author's private collection.

## **J. P. Morgan**

Source: Photography by Edward Steichen

[http://en.wikipedia.org/wiki/Image:JP\\_Morgan.jpg](http://en.wikipedia.org/wiki/Image:JP_Morgan.jpg)

## **Jay Gould**

Source: Library of Congress

[http://memory.loc.gov/cgi-bin/query/S?pp/ils:@FILREQ\(@field\(SUBJ+@od1\(Portrait+photographs--1860-1900+\)\)+@FIELD\(COLLID+ggbain\)\)](http://memory.loc.gov/cgi-bin/query/S?pp/ils:@FILREQ(@field(SUBJ+@od1(Portrait+photographs--1860-1900+))+@FIELD(COLLID+ggbain)))

## **Philip Armour**

Source: Unknown photographer

[http://en.wikipedia.org/wiki/Image:Philip\\_D\\_Armour\\_in\\_the\\_1880s.jpg](http://en.wikipedia.org/wiki/Image:Philip_D_Armour_in_the_1880s.jpg)

## **Louis Lingg**

Source: Photo print on card

[http://en.wikipedia.org/wiki/Image:Louis\\_Lingg\\_portrait.jpg](http://en.wikipedia.org/wiki/Image:Louis_Lingg_portrait.jpg)

## **William S. Burroughs I**

Source: Unknown

<http://www.findagrave.com/cgi-bin/fg.cgi?page=gr&GRid=2979>

## **Alexander Graham Bell**

Source: Library and Archives Canada

[http://en.wikipedia.org/wiki/Image:Alexander\\_Graham\\_Bell.jpg](http://en.wikipedia.org/wiki/Image:Alexander_Graham_Bell.jpg)

## **Frank Woolworth**

Source: Unknown photograph

<http://en.wikipedia.org/wiki/Image:FWWoolworth.jpg>

## **John D. Rockefeller**

Source: The Rockefeller Archive Center

[http://en.wikipedia.org/wiki/Image:John\\_D.\\_Rockefeller\\_1885.jpg](http://en.wikipedia.org/wiki/Image:John_D._Rockefeller_1885.jpg)

## **Frederick Taylor**

Source: Unknown Photograph

[http://en.wikipedia.org/wiki/Image:Frederick\\_Winslow\\_Taylor\\_crop.jpg](http://en.wikipedia.org/wiki/Image:Frederick_Winslow_Taylor_crop.jpg)

**D. C. Stephenson**

Source: Unknown Photograph

<http://www.findagrave.com/cgi-bin/fg.cgi?page=gr&GSln=Stephenson&GSfn=David&GSbyrel=all&GSdyrel=all&GSob=n&GRid=3179291&>

**Charles Coughlin**

Source: Unknown Photograph

<http://en.wikipedia.org/wiki/Image:CharlesCoughlin222.jpg>

**Henry Wallace**

Source: Official US Government photograph

[http://en.wikipedia.org/wiki/Image:Henry\\_A.\\_Wallace.jpg](http://en.wikipedia.org/wiki/Image:Henry_A._Wallace.jpg)

**Gregory Peck**

Source: Image cropped from film trailer to Roman Holiday

[http://en.wikipedia.org/wiki/Image:Gregory\\_Peck\\_in\\_Roman\\_Holiday\\_trailer\\_cropped.jpg](http://en.wikipedia.org/wiki/Image:Gregory_Peck_in_Roman_Holiday_trailer_cropped.jpg)

**Fulton Sheen**

Source: Publicity photograph distributed by Dumont Network

<http://en.wikipedia.org/wiki/Image:BpSheen.png>

**Frank Sinatra**

Source: Photo taken at Girl's Town Ball in Florida on 12-Mar-1960

[http://en.wikipedia.org/wiki/Image:Frank\\_Sinatra\\_laughing.jpg](http://en.wikipedia.org/wiki/Image:Frank_Sinatra_laughing.jpg)

**Robert F. Williams**

Source: FBI portrait

[http://en.wikipedia.org/wiki/Image:Robert\\_F.\\_Williams.jpg](http://en.wikipedia.org/wiki/Image:Robert_F._Williams.jpg)

**Laurence Tureaud**

Source: US Army Image

<http://en.wikipedia.org/wiki/Image:MrT.jpg>

**Bill Gates**

Source: Photo taken during press conference at Davos, 25-Jan-2008

[http://en.wikipedia.org/wiki/Image:Bill\\_Gates\\_-\\_World\\_Economic\\_Forum\\_Annual\\_Meeting\\_Davos\\_2008\\_number3.jpg](http://en.wikipedia.org/wiki/Image:Bill_Gates_-_World_Economic_Forum_Annual_Meeting_Davos_2008_number3.jpg)

**LAUS DEO**